

SC BIRTH OUTCOMES INITIATIVE

Geospatial Environmental Scan[®]

Communities of Opportunity & Population Health

DECEMBER 2021

University of South Carolina
Institute for Families in Society
Division of Integrated Health and Policy Research



The SC Birth Outcomes Initiative (BOI) Geospatial Environmental Scan[®] was developed under contract with the South Carolina Department of Health and Human Services.

© 2021 University of South Carolina. All rights reserved.



TABLE OF CONTENTS

Data Usage Restrictions	3
Important Usage Information and Caveats.....	4
What is a Geospatial Environmental Scan®?	4
Why Use It?.....	5
What It Contains.....	6
BOI Interactive Map.....	7
HEDIS Factsheet	8
Drive Time Infographic	9
Statewide Summary Table	10
County Information Table	12
SC Perinatal Hospitals Table	14
Metadata	16
ZCTA Locator Maps: By Perinatal Region (5 maps)	28
ZCTA Locator Information Table	33

SUGGESTED CITATION

Institute for Families in Society, Division of Integrated Health and Policy Research. (2021). *SC Birth Outcomes Initiative Geospatial Environmental Scan*® [Interactive Adobe PDF]. In SC HealthViz. University of South Carolina, provided under contract to the SC Department of Health and Human Services.
<https://shealthviz.sc.edu/birth-outcomes-initiative>.



Pro Tips

Click on a page number to go to the page.

Click on any IFS logo to return here.

Use the Statewide Summary button.

This button on the BOI Interactive Map takes you to a summary table of total counts and percentages/rates for South Carolina and for urban, suburban, and rural areas of the state.





Data Usage Restrictions

The data contained in this document is a reference tool provided for your use related to communities of opportunity and their association with birth outcomes. Distribution and use of this data is limited solely to planning purposes associated with the work of the SC Birth Outcomes Initiative. Use of this data is not authorized for any other activity or purpose without the written permission of the University of South Carolina, Institute for Families in Society. Any errors are solely those of the contractor and not SCDHHS.

BY ACCESSING THE MAPS AND TABLES PROVIDED ON THE PAGES THAT FOLLOW, YOU ARE ACKNOWLEDGING AND ACCEPTING THE USAGE RESTRICTIONS DETAILED ABOVE.

For more information or to request alternate usage permission, please contact:

Dr. Ana Lòpez-De Fede
Institute for Families in Society
Division of Integrated Health and Policy Research (IHPR)
University of South Carolina
1600 Hampton Street, Suite 507
Columbia, SC 29208
adefede@mailbox.sc.edu
(803) 777-2098

We wish to acknowledge the valuable contributions made by IHPR Data Science and Visualization Team, Maternal and Child Health (MCH) & Equity Projects Team, and Information Design staff members in the development of this product as well as the members of the SCBOI Data Workgroup. The SCBOI Geospatial Environmental Scan[®] was developed under contract with the South Carolina Department of Health and Human Services.

© 2021 University of South Carolina. All rights reserved.



Important Usage Information & Caveats

- See the SC BOI Geospatial Environmental Scan® User Guide for detailed usage instructions.
- Please note that the interactive map may take several seconds to load.
- For full functionality, this document is best viewed on a Windows or Macintosh desktop or laptop computer.
- Users are encouraged to review all tables and metadata.
- Reported data values based on small population numbers should be interpreted with caution.

What is a Geospatial Environmental Scan®?

A Geospatial Environmental Scan® (GeoEScan®) is an information gathering process and a resulting information product. As a process, it is a systematic collection and analysis of information to identify and forecast local population characteristics, health needs, social determinants of health, resource availability, and other factors that may strengthen or threaten population wellbeing.

The information product that results from the process provides an interactive tool that can be used to explore select characteristics at multiple geographic levels. The GeoEScan® uses Geographic Information System (GIS) applications to capture, integrate, analyze, and display data.



Why Use It?

The goal of the GeoEScan® is to provide the most reliable, meaningful data at the smallest geography possible without releasing any protected health information (PHI). For our maps, this requires that we protect individuals from being identified while still showing the geographic variations that can be useful in policy development and programming, such as mapping at the ZIP Code Tabulation Area (ZCTA) level. Using ZCTA-level data provides a good compromise between protecting health information, ensuring rates are reliable, and showing geographic variation at a finer level.

The GeoEScan® presents a platform to examine the social determinants of health (SDoH) and their association with and impact on birth outcomes. These maps help users to connect health and place; to identify communities of opportunity; and to evaluate areas for further research, program development, or outreach efforts.

Other maps included in the GeoEScan® allow users to identify individual ZCTAs by place name. ZCTA- and county-level data tables also are provided. The information contained in the GeoEScan® provides a contextual framework to explore birth outcomes and SDoH.

What are ZIP Code Tabulation Areas?



ZIP Code Tabulation Areas (ZCTAs) are approximate area representations of U.S. Postal Service five-digit ZIP Code service areas used by the Census Bureau to present statistical data from censuses and surveys.

See the Metadata for additional details.



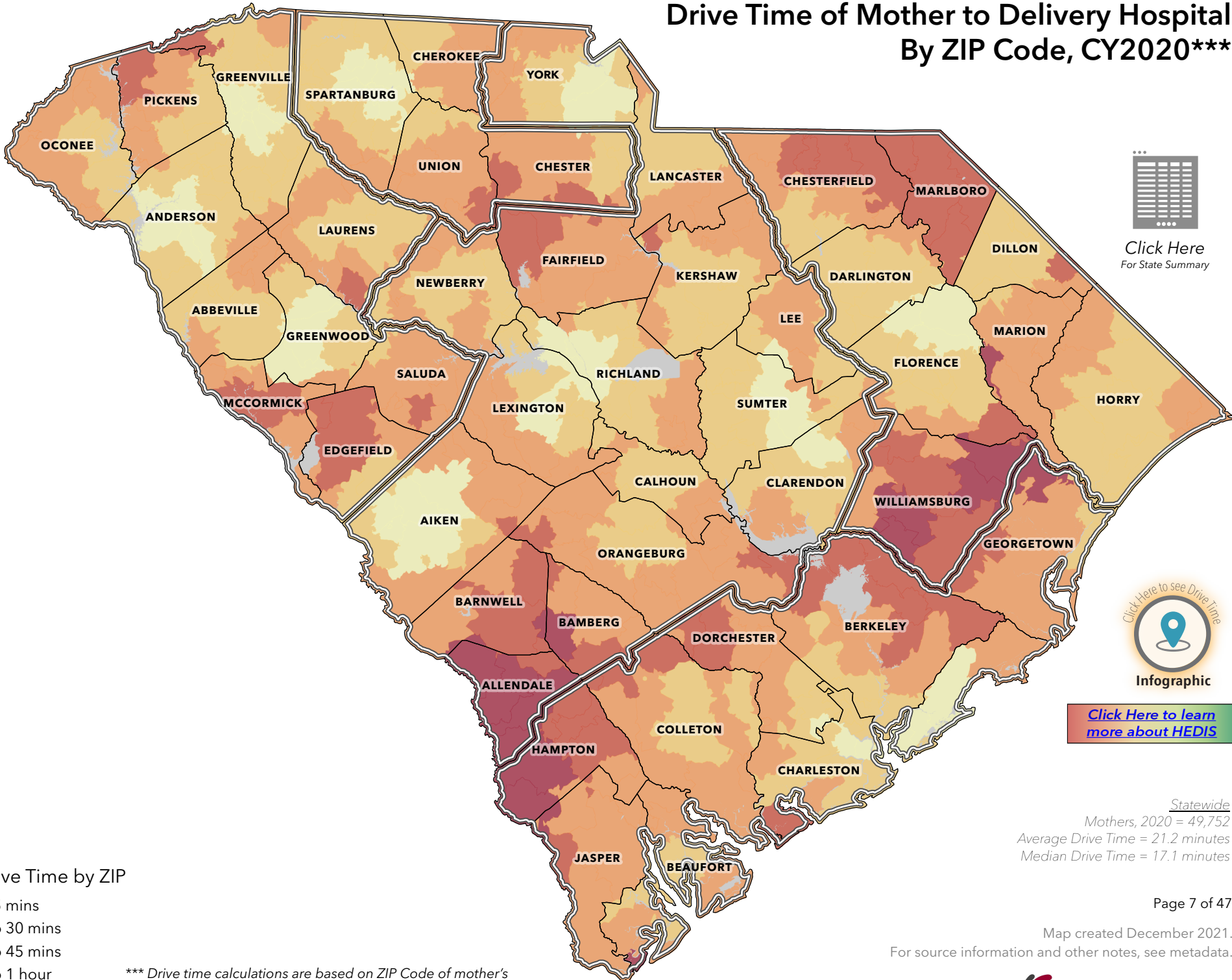
What It Contains

The GeoEScan® contains data elements such as:

- Social Determinants of Health Indicators
 - High Social Vulnerability Index (SVI) Areas ¹
 - USDA Food Deserts
- Hospital Births in 2020
 - Counts of Births by County
 - Proportion of Births by Payor (Medicaid, Private, Other)
 - Birth Rate Per 1,000 Total Population
 - Birth Rate Per 1,000 Females 15-44
- Maternal Conditions Among Hospitalized Mothers
 - Chronic Conditions
 - Behavioral Health Conditions
 - Both Chronic and Behavioral
 - No Chronic or Behavioral Health Conditions
- Utilization of Timely Prenatal and Postpartum Care (HEDIS)
- Drive Time to Maternal Care
- Rural, Suburban, and Urban Areas
- Identification of OB/GYN Practices and Baby-Friendly Hospitals
- Perinatal Regions and Perinatal Hospitals by Level

¹ Explore Social Vulnerability by Community in South Carolina: <https://arcg.is/1XSqe1>

Drive Time of Mother to Delivery Hospital By ZIP Code, CY2020***



[Click Here](#)
For State Summary



[Click Here to see Drive Time](#)
Infographic

[Click Here to learn more about HEDIS](#)

Average Drive Time by ZIP

- 1 to 15 mins
- 15.1 to 30 mins
- 30.1 to 45 mins
- 45.1 to 1 hour
- > 1 hour
- No Data

*** Drive time calculations are based on ZIP Code of mother's residence to delivery hospital and does not take severity of mother's condition or purpose for driving further to delivery hospital into consideration.

Statewide
Mothers, 2020 = 49,752
Average Drive Time = 21.2 minutes
Median Drive Time = 17.1 minutes

HEDIS: Measuring Prenatal and Postpartum Care in SC Medicaid

The Healthcare Effectiveness Data and Information Set (HEDIS) is a national performance assessment and improvement tool used by SCDHHS to compare SC to national benchmarks and create goals for improvement. HEDIS evaluates many different levels of care such as effectiveness, access, and utilization. The National Center for Quality Assurance (NCQA) collects HEDIS data from health care organizations around the US and uses the data to calculate national benchmarks and set measure standards.

WHY IT MATTERS

Pregnancy-related deaths occur at any point during pregnancy and after delivery. More than half of these are preventable.¹ Adequate and ongoing postpartum care promotes the overall health and well-being of women.²

NEXT STEPS FOR SC

The South Carolina Birth Outcomes Initiative (SCBOI), in collaboration with eight other states, has accepted the challenge of improving the quantity and quality of postpartum visits by creating the South Carolina Postpartum Learning Collaborative (SCPPLC). The aims of the SCPPLC are to increase postpartum visits by 15% by the year 2026, with a particular focus on mothers of color in rural areas.

NOTES:

1 Petersen, E. E., Davis, N. L., Goodman, D., Cox, S., Mayes, N., Johnston, E., Syver-son, C., Seed, K., Shapiro-Mendoza, C. K., Callaghan, W. M., & Barfield, W. (2019). Vital Signs: Pregnancy-Related Deaths, United States, 2011-2015, and Strategies for Prevention, 13 States, 2013-2017. MMWR. Morbidity and mortality weekly report, 68(18), 423-429. <https://doi.org/10.15585/mmwr.mm6818e1>

2 American College of Obstetricians and Gynecologists (ACOG). (2018). Optimizing Postpartum Care. ACOG Committee Opinion No. 736. Obstet Gynecol, 131:140-150.

GeoEScan Map Measure (Click each Measure below to view map)		Statewide		Rural		Suburban		Urban	
		N	Percent/Prevalence	N	Percent/Prevalence	N	Percent/Prevalence	N	Percent/Prevalence
Realized Access to Prenatal and Postpartum Care	Timeliness of Prenatal Care Visits 2020	16,205	68.9	2,601	70.4	6,077	69.3	7,527	68.2
	Postpartum Care Visits 2020	15,074	64.1	2,242	60.7	5,544	63.2	7,288	66.0
	Eligible Population 2020	23,505	100.0	3,696	15.7	8,767	37.3	11,042	47.0

Two HEDIS measures are used to measure access to prenatal & postpartum care.

Timeliness of Prenatal Care:

The percentage of deliveries in which women had a prenatal care visit in the first trimester, on or before the enrollment start date or within 42 days of enrollment in the organization

68.9% of pregnant mothers enrolled in SC Medicaid received timely prenatal care.

Postpartum Care:

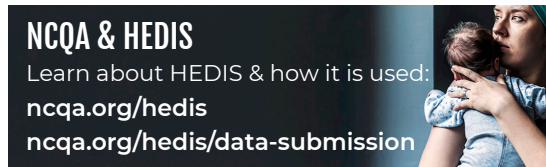
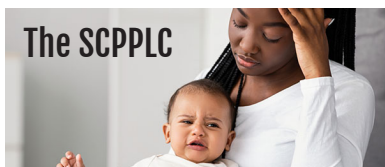
The percentage of deliveries in which women had a postpartum visit on or between 7 and 84 days after delivery

64.1% of pregnant mothers enrolled in SC Medicaid received a postpartum care visit.



Institute for Families in Society
Improving Policy. Advancing Practice.
Strengthening Communities and Family Well-Being.

Explore 



SC Drive Time to Delivery & Births by Perinatal Hospital Level

2020



About a third of hospitals that delivered any SC births had **no Perinatal status**, but only **5%** of births were in these hospitals.



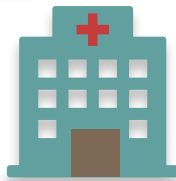
About **20%** of hospitals with any births were Perinatal **Level I** and accounted for about **8%** of all SC births.



Pregnancies Without Conditions: Closer-to-Home Deliveries

42% of mothers **with no condition** use the nearest available hospital. With a chronic condition, using the nearest drops to 40%.

SC Medicaid paid for...
 60% of total births
 72% of births in rural areas
 54% of births in urban areas



49% of all SC births were in the state's Perinatal **Level II** hospitals.

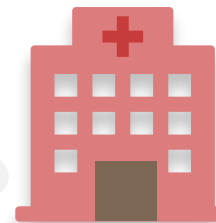


Pregnancy Conditions & Perinatal Level

Mothers with conditions are more likely to go to Perinatal Level III and IV hospitals.

No condition	29%
Any condition	37%
Chronic + behavioral health condition	42%

32% of hospitals that delivered any SC births in 2020 were Perinatal **Level II** hospitals.



38% of all SC Births were in Perinatal **Level III or IV** hospitals. These hospitals make up **14%** of all hospitals that delivered any SC births.

Conditions During Pregnancy & Drive Times



Average & median drive times increase with pregnancy conditions.

Drive Time (in minutes)	AVG	MEDIAN
No condition	20	16.5
Any condition	22	18
Chronic + behavioral health condition	23	19

Click to go to the map.



Condition is defined as any chronic or behavioral health condition contributing to a hospitalization before, during, or after pregnancy. See [metadata](#) for more information.



Institute for Families in Society
 Improving Policy. Advancing Practice.
 Strengthening Communities and Family Well-Being.

Statewide Summary

GeoEScan Map Measure (Click Measure Below to View Map)		Statewide		Rural		Suburban		Urban	
		N	Percent/ Prevalence	N	Percent/ Prevalence	N	Percent/ Prevalence	N	Percent/ Prevalence
Population* and Birth Counts	Total Population, ACS 2019	4,992,629	100.0	607,287	12.2	1,713,470	34.3	2,671,872	53.5
	Females 15-44, ACS 2019	955,898	100.0	103,489	10.8	313,067	32.8	539,342	56.4
	Total Hospital Births, 2020	50,455	100.0	5,416	10.7	16,577	32.9	28,462	56.4
Maternal Conditions Among Hospitalized Mothers, 2019	Chronic Conditions	11,361	23.5	1,379	12.1	3,815	33.6	6,167	54.3
	Behavioral Health Conditions	11,777	24.3	1,446	12.3	4,322	36.7	6,009	51.0
	Both (Chronic and Behavioral Health Conditions)	3,840	7.9	466	12.1	1,396	36.4	1,978	51.5
	None (No Chronic or Behavioral Health Conditions)	29,083	60.1	2,887	9.9	9,296	32.0	16,900	58.1
Hospital Births by Payor, 2020	Medicaid	30,731	60.9	5,504	17.9	9,267	30.2	15,960	51.9
	Private	15,189	30.1	1,075	7.1	3,734	24.6	10,380	68.3
	Other	4,537	9.0	383	8.4	2,001	44.1	2,153	47.5

Statewide Summary

GeoEScan Map Measure (Click Measure Below to View Map)		Statewide		Rural		Suburban		Urban	
		N	Percent/ Prevalence	N	Percent/ Prevalence	N	Percent/ Prevalence	N	Percent/ Prevalence
Birth Rates**	Hospital Birth Rate Per 1,000 Total Population	50,455 Births	10.1	5,416 Births	8.9	16,577 Births	9.7	28,462 Births	10.7
	Hospital Birth Rate Per 1,000 Females 15-44	50,455 Births	52.8	5,416 Births	52.3	16,577 Births	53.0	28,462 Births	52.8

* Population includes counts involving ZCTAs with a birth recorded.

** Birth rates are calculated from the Population and Birth Counts values on page one of this table.

County Summary

County	Population Estimates and Birth Counts and Rates, 2020					Hospital Births by Payor, 2020			Maternal Conditions Among Hospitalized Mothers, 2019				Realized Access to Prenatal and Postpartum Care, 2020				OB/GYN Providers	SC Perinatal Region	Social Vulnerability Index (SVI) (% Tract Population in Top Quartile)	Index of Relative Rurality (IRR), 2019	
	Total Population	Females Ages 15-44	Total Hospital Births	Hospital Birth Rate Per 1,000 Females 15-44	Hospital Birth Rate Per 1,000 Total Population	Medicaid	Private	Other	Chronic Conditions	Behavioral Health Conditions	Both (Chronic and Behavioral Health Conditions)	None (No Chronic or Behavioral Health Conditions)	Timeliness of Prenatal Care Visits	Postpartum Care Visits	Eligible Population	Rate of Timeliness of Prenatal Care Visits					Rate of Postpartum Care Visits
Abbeville	24,627	4,257	197	46.3	8.0	64.0	22.3	13.7	20.8	36.2	20.8	53.1	102	91	137	74.5	66.4	5	I	56.3	0.81
Aiken	168,301	31,199	916	29.4	5.4	72.7	20.0	7.3	24.8	29.0	24.8	54.4	513	425	731	70.2	58.1	94	III	20.3	0.65
Allendale	9,024	1,311	67	51.1	7.4	88.1	9.0	3.0	33.3	22.9	33.3	50.0	39	29	46	84.8	63.0	0	III	87.5	1.00
Anderson	198,064	36,761	1,965	53.5	9.9	63.5	31.7	4.8	19.7	40.4	19.7	49.2	604	625	952	63.4	65.7	121	I	19.5	0.43
Bamberg	14,376	2,527	124	49.1	8.6	83.1	12.1	4.8	24.3	18.9	24.3	61.3	72	57	92	78.3	62.0	9	III	83.6	0.97
Barnwell	21,346	3,843	221	57.5	10.4	77.8	16.3	5.9	28.7	20.1	28.7	59.1	131	102	179	73.2	57.0	5	III	59.2	0.92
Beaufort	186,095	29,446	1,643	55.8	8.8	50.3	23.9	25.8	18.3	23.6	18.3	64.1	339	319	542	62.5	58.9	464	V	16.8	0.55
Berkeley	215,044	43,174	2,580	59.8	12.0	53.3	28.6	18.0	28.8	31.1	28.8	50.8	717	613	990	72.4	61.9	428	V	6.1	0.63
Calhoun	14,663	2,529	86	34.0	5.9	65.1	32.6	2.3	26.6	18.8	26.6	64.1	42	35	57	73.7	61.4	7	III	41.2	0.88
Charleston	401,165	84,508	4,918	58.2	12.3	42.2	47.8	9.9	36.3	27.0	36.3	47.9	939	830	1,344	69.9	61.8	1,793	V	15.7	0.28
Cherokee	56,895	11,159	616	55.2	10.8	77.1	18.8	4.1	29.5	44.0	29.5	42.4	240	251	387	62.0	64.9	27	II	16.2	0.73
Chester	32,311	5,694	269	47.2	8.3	79.6	16.7	3.7	31.9	36.9	31.9	47.5	150	131	216	69.4	60.6	12	II	11.0	0.88
Chesterfield	45,953	8,063	265	32.9	5.8	87.2	11.7	1.1	25.3	32.6	25.3	50.2	184	152	268	68.7	56.7	30	IV	53.7	0.93
Clarendon	33,957	5,358	294	54.9	8.7	81.0	13.3	5.8	35.6	27.8	35.6	49.6	156	140	213	73.2	65.7	136	III	63.7	0.79
Colleton	37,585	6,526	433	66.3	11.5	83.8	9.5	6.7	30.6	36.8	30.6	43.3	243	209	314	77.4	66.6	108	V	38.4	0.91
Darlington	67,027	12,557	749	59.6	11.2	76.6	19.1	4.3	34.6	34.3	34.6	43.5	338	273	486	69.5	56.2	95	IV	52.2	0.76
Dillon	30,689	5,871	367	62.5	12.0	84.2	13.4	2.5	32.7	39.8	32.7	41.2	181	139	253	71.5	54.9	66	IV	62.9	0.85
Dorchester	158,299	31,824	1,770	55.6	11.2	54.6	30.3	15.1	29.7	30.4	29.7	50.9	531	469	714	74.4	65.7	292	V	7.2	0.61
Edgefield	26,927	4,148	83	20.0	3.1	73.5	15.7	10.8	26.2	33.3	26.2	51.2	72	62	108	66.7	57.4	0	I	44.3	0.84
Fairfield	22,565	3,917	188	48.0	8.3	83.0	14.4	2.7	30.3	33.1	30.3	49.7	77	76	117	65.8	65.0	38	III	36.7	0.84
Florence	138,475	27,448	1,543	56.2	11.1	69.5	26.2	4.3	38.2	34.5	38.2	43.2	561	517	822	68.2	62.9	371	IV	40.3	0.58
Georgetown	61,952	9,536	514	53.9	8.3	68.1	27.0	4.9	25.2	25.2	25.2	57.3	179	177	269	66.5	65.8	154	V	47.8	0.81
Greenville	507,003	101,144	6,208	61.4	12.2	50.2	43.3	6.5	29	34	29	49	1,315	1,313	1,881	69.9	69.8	1,609	I	15.2	0.01
Greenwood	70,411	14,130	784	55.5	11.1	70.3	21.9	7.8	18.9	38.4	18.9	52.0	312	289	424	73.6	68.2	69	I	37.8	0.76
Hampton	19,564	3,153	233	73.9	11.9	87.6	8.2	4.3	30.2	35.2	30.2	49.4	85	74	140	60.7	52.9	48	V	33.9	0.98
Horry	332,172	56,638	2,946	52.0	8.9	68.8	25.0	6.2	17.0	30.2	17.0	60.0	1,133	1,060	1,501	75.5	70.6	215	IV	13.8	0.43
Jasper	28,657	4,919	323	65.7	11.3	77.1	13.0	9.9	15.7	14.8	15.7	73.1	106	85	167	63.5	50.9	77	V	59.4	0.86

County Summary

County	Population Estimates and Birth Counts and Rates, 2020					Hospital Births by Payor, 2020			Maternal Conditions Among Hospitalized Mothers, 2019				Realized Access to Prenatal and Postpartum Care, 2020				OB/GYN Providers	SC Perinatal Region	Social Vulnerability Index (SVI) (% Tract Population in Top Quartile)	Index of Relative Rurality (IRR), 2019	
	Total Population	Females Ages 15-44	Total Hospital Births	Hospital Birth Rate Per 1,000 Females 15-44	Hospital Birth Rate Per 1,000 Total Population	Medicaid	Private	Other	Chronic Conditions	Behavioral Health Conditions	Both (Chronic and Behavioral Health Conditions)	None (No Chronic or Behavioral Health Conditions)	Timeliness of Prenatal Care Visits	Postpartum Care Visits	Eligible Population	Rate of Timeliness of Prenatal Care Visits					Rate of Postpartum Care Visits
Kershaw	65,112	11,618	755	65.0	11.6	58.5	27.9	13.5	23.2	31.6	23.2	54.2	233	196	325	71.7	60.3	64	III	16.4	0.76
Lancaster	92,308	16,277	462	28.4	5.0	81.2	14.9	3.9	28.3	29.3	28.3	54.4	256	205	357	71.7	57.4	74	III	15.8	0.75
Laurens	66,846	12,247	621	50.7	9.3	72.9	19.5	7.6	23.6	42.9	23.6	45.5	275	247	380	72.4	65.0	147	I	29.3	0.79
Lee	17,365	2,785	134	48.1	7.7	88.1	9.7	2.2	27.6	24.3	27.6	55.3	88	71	110	80.0	64.5	8	III	72.6	0.82
Lexington	290,278	56,019	3,058	54.6	10.5	54.1	38.9	7.0	25.2	29.0	25.2	55.3	783	726	1,178	66.5	61.6	477	III	9.6	0.33
McCormick	9,531	956	39	40.8	4.1	79.5	7.7	12.8	25.0	20.8	25.0	54.2	25	21	34	73.5	61.8	0	I	58.0	0.91
Marion	31,308	5,793	365	63.0	11.7	84.1	11.8	4.1	36.6	35.6	36.6	41.9	164	141	230	71.3	61.3	35	IV	70.0	0.82
Marlboro	26,753	4,328	147	34.0	5.5	87.1	8.2	4.8	34	26	34.4	50	141	111	211	66.8	52.6	52	IV	78.8	0.91
Newberry	38,194	6,808	403	59.2	10.6	73.0	23.6	3.5	21.9	30.2	21.9	55.9	141	124	198	71.2	62.6	30	III	41.8	0.88
Oconee	77,528	12,436	635	51.1	8.2	65.0	27.4	7.6	19.9	39.4	19.9	50.0	242	228	359	67.4	63.5	218	I	29.4	0.73
Orangeburg	87,687	16,787	847	50.5	9.7	82.4	12.3	5.3	23.0	17.0	23.0	66.1	391	347	560	69.8	62.0	89	III	52.4	0.85
Pickens	124,029	26,207	1,169	44.6	9.4	56.1	36.9	7.0	31.5	40.6	31.5	42.9	356	331	497	71.6	66.6	190	I	15.7	0.57
Richland	411,357	95,650	4,542	47.5	11.0	60.4	28.7	10.9	33.4	25.2	33.4	52.1	1,148	1,270	1,915	59.9	66.3	1,127	III	16.8	0.18
Saluda	20,303	3,423	192	56.1	9.5	76.0	12.5	11.5	12.6	14.6	12.6	76.2	65	57	88	73.9	64.8	3	I	41.6	0.91
Spartanburg	307,617	60,136	3,675	61.1	11.9	62.8	30.7	6.4	24.4	32.7	24.4	53.3	1,170	1,101	1,699	68.9	64.8	465	II	25.7	0.26
Sumter	106,757	20,776	1,380	66.4	12.9	63.3	11.8	24.9	26	25	25.9	59	510	479	663	76.9	72.2	204	III	42.6	0.57
Union	27,490	4,785	276	57.7	10.0	78.6	14.9	6.5	32.7	49.0	32.7	36.1	118	126	196	60.2	64.3	17	II	52.1	0.82
Williamsburg	31,324	5,346	274	51.3	8.7	80.7	16.4	2.9	32.7	23.6	32.7	52.7	121	122	201	60.2	60.7	8	IV	47.4	0.86
York	265,872	53,477	1,181	22.1	4.4	66.4	30.6	3.0	21.5	28	21.5	59	617	628	954	64.7	65.8	222	III	9.5	0.41

Perinatal Hospitals

Hospital Name	Street	City	State	ZIP	ZCTA	County	Perinatal Level	Baby-Friendly Hospitals
Aiken Regional Medical Centers	302 University Pkwy	Aiken	SC	29801	29801	Aiken	Perinatal Level II	No
Anmed Health Women's And Children's Hospital	2000 E Greenville St.	Anderson	SC	29621	29621	Anderson	Perinatal Level II	No
Beaufort Memorial Hospital	955 Ribaut Rd.	Beaufort	SC	29902	29902	Beaufort	Perinatal Level II	No
Bon Secours - St. Francis Xavier Hospital	2095 Henry Tecklenburg Dr.	Charleston	SC	29414	29414	Charleston	Perinatal Level II	Yes
Carolina Pines Regional Medical Center	1304 W Bobo Newsom Hwy.	Hartsville	SC	29550	29550	Darlington	Perinatal Level II	No
Coastal Carolina Hospital	1000 Medical Center Dr.	Hardeeville	SC	29927	29927	Jasper	Perinatal Level I	No
Colleton Medical Center	501 Robertson Blvd.	Walterboro	SC	29488	29488	Colleton	Perinatal Level I	No
Conway Hospital	300 Singleton Ridge Rd.	Conway	SC	29526	29526	Horry	Perinatal Level II	No
East Cooper Medical Center	2000 Hospital Dr.	Mount Pleasant	SC	29464	29464	Charleston	Perinatal Level II	No
Grand Strand Medical Center	809 82nd Pkwy.	Myrtle Beach	SC	29572	29572	Horry	Perinatal Level II	No
Hilton Head Hospital	25 Hospital Center Blvd.	Hilton Head Island	SC	29926	29926	Beaufort	Perinatal Level I	No
Kershawhealth	1315 Roberts St.	Camden	SC	29020	29020	Kershaw	Perinatal Level I	No
Lexington Medical Center	2720 Sunset Blvd.	West Columbia	SC	29169	29169	Lexington	Perinatal Level II	No
McLeod Health Clarendon	10 E Hospital St.	Manning	SC	29102	29102	Clarendon	Perinatal Level I	No
McLeod Loris	3655 Mitchell St.	Loris	SC	29569	29569	Horry	Perinatal Level I	No
McLeod Medical Center Dillon	301 E Jackson St.	Dillon	SC	29536	29536	Dillon	Perinatal Level I	Yes
McLeod Regional MedicalCenter Of The Pee Dee	555 E Cheves St.	Florence	SC	29506	29506	Florence	Perinatal Level III Regional Center	Yes
MUSC Health Florence Women's Pavillion	805 Pamplico Hwy.	Florence	SC	29505	29505	Florence	Perinatal Level II	No
MUSC Health Lancaster Medical Center	800 W Meeting St.	Lancaster	SC	29720	29720	Lancaster	Perinatal Level II	No
MUSC Medical Center	169 Ashley Ave.	Charleston	SC	29425	29403	Charleston	Perinatal Level IV*	Yes

Perinatal Hospitals

Hospital Name	Street	City	State	ZIP	ZCTA	County	Perinatal Level	Baby-Friendly Hospitals
Newberry County Memorial Hospital	2669 Kinard St.	Newberry	SC	29108	29108	Newberry	Perinatal Level I	No
Piedmont Medical Center	222 S Herlong Ave.	Rock Hill	SC	29732	29732	York	Perinatal Level III	Yes
Prisma Health Baptist	1330 Taylor St.	Columbia	SC	29220	29201	Richland	Perinatal Level III	Yes
Prisma Health Baptist Easley Hospital	200 Fleetwood Dr.	Easley	SC	29640	29640	Pickens	Perinatal Level I	Yes
Prisma Health Baptist Parkridge	400 Palmetto Health Pkwy.	Columbia	SC	29212	29212	Richland	Perinatal Level II	Yes
Prisma Health Greenville Memorial Hospital	701 Grove Rd.	Greenville	SC	29605	29605	Greenville	Perinatal Level III Regional Center	Yes
Prisma Health Greer Memorial Hospital	830 S Buncombe Rd.	Greer	SC	29650	29650	Greenville	Perinatal Level II	Yes
Prisma Health Laurens County Hospital	22725 Hwy 76 E	Clinton	SC	29325	29360	Laurens	Perinatal Level I	Yes
Prisma Health Oconee Memorial Hospital	298 Memorial Dr.	Seneca	SC	29672	29672	Oconee	Perinatal Level I	Yes
Prisma Health Patewood Hospital	175 Patewood Dr.	Greenville	SC	29615	29615	Greenville	Perinatal Level II	No
Prisma Health Richland	5 Richland Medical Park Dr.	Columbia	SC	29203	29203	Richland	Perinatal Level III Regional Center	Yes
Prisma Health Tuomey Hospital	129 N Washington St.	Sumter	SC	29150	29150	Sumter	Perinatal Level II	Yes
Regional MedicalCenter Of Orangeburg & Calhoun Counties	3000 Saint Matthews Rd.	Orangeburg	SC	29118	29118	Orangeburg	Perinatal Level II	No
Roper St. Francis Berkley Hospital	100 Callen Blvd.	Summerville	SC	29486	29461	Berkeley	Perinatal Level I	No
Self Regional Healthcare	1325 Spring St.	Greenwood	SC	29646	29646	Greenwood	Perinatal Level III	No
Spartanburg Medical Center	101 E Wood St.	Spartanburg	SC	29303	29303	Spartanburg	Perinatal Level III Regional Center	Yes
St. Francis - Eastside	125 Commonwealth Dr.	Greenville	SC	29615	29615	Greenville	Perinatal Level II	No
Summerville Medical Center	295 Midland Pkwy.	Summerville	SC	29485	29485	Dorchester	Perinatal Level II	No
Tidelands Waccamaw Community Hospital	4070 Hwy 17 Bypass	Murrells Inlet	SC	29576	29576	Georgetown	Perinatal Level II	Yes

*This facility has been advanced from a RPC (Level III) program to a Level IV program. It continues to serve as the RPC facility for the region.

Metadata

Map Layers and Methodologies

Basemaps

Data Element	Source	Definition
Hospital Birth Rate Per 1,000 Total Population	<p>South Carolina Revenue and Fiscal Affairs Office (SC RFA), Health and Demographics, all-payer uniformed billing data for hospital discharges (UB-04)</p> <p>South Carolina Department of Health and Environmental Control (SCDHEC) Division of Biostatistics, Vital Statistics Data for Calendar Year (CY) 2020 as of October, 2021.</p> <p>US Census Bureau, American Community Survey 2019 5-Year Estimates.</p>	<p>This is a ZCTA level measure that represents the rate of SC hospital births in 2020 out of the total population in 2019. Births are assigned to ZCTA based on mother's residence at the time of birth.</p> <p>Hospital births do not include babies born out-of-state, at free-standing facilities, or at home.</p> <p>Statewide Total Population, 2019 = 4,992,629 Hospital Births, 2020 = 50,455 Rate = 10.1 Per 1,000 Births</p>
Hospital Birth Rate Per 1,000 Females 15-44	<p>South Carolina Revenue and Fiscal Affairs Office (SC RFA), Health and Demographics, all-payer uniformed billing data for hospital discharges (UB-04)</p> <p>South Carolina Department of Health and Environmental Control (SCDHEC) Division of Biostatistics, Vital Statistics Data for Calendar Year (CY) 2020 as of October, 2021.</p> <p>US Census Bureau, American Community Survey 2019 5-Year Estimates.</p>	<p>This is a ZCTA level measure that represents the rate of SC hospital births in 2020 out of females 15-44 in 2019. Births are assigned to ZCTA based on mother's residence at the time of birth.</p> <p>Statewide Females 15-44, 2019 = 955,898 Hospital Births, 2020 = 50,455 Rate = 52.8 Per 1,000 Births</p>

Metadata

<p>Drive Time of Mother to Delivery Hospital, 2020</p>	<p>South Carolina Revenue and Fiscal Affairs Office (SC RFA), Health and Demographics, all-payer uniformed billing data for hospital discharges (UB-04) South Carolina Department of Health and Environmental Control (SCDHEC) Division of Biostatistics, Vital Statistics Data for Calendar Year (CY) 2020 as of October, 2021.</p>	<p>This is a ZIP Code level measure that represents every birth that took place in South Carolina for 2020. Travel time was calculated in driving minutes from the population centroid of the mother's residential ZIP Code* of residence to the address of the Hospital where the birth occurred. These travel times were determined using ArcGIS Pro ArcGIS Pro 2.8.3 using an Origin-Destination Cost Matrix analysis, part of the Network Analyst toolset, along with Esri's Street Map Premium road network. The average travel time is calculated as follow for each ZIP Code: $\text{sum}(\text{minutes traveled})/\text{count}(\text{mothers})$. This measure does not take severity of a mother's condition or purpose for driving further to delivery hospital into consideration.</p> <p>*The mother's ZIP Code is from a UB-04 Claim, when present, or SC DHEC Vital Records.</p> <p>Statewide Mothers, 2020 = 49,658 Average Drive Time = 28.7 minutes Median Drive Time = 27.3 minutes</p>
<p>Rate of Timeliness of Prenatal Care Visits, 2020</p>	<p>Calendar Year (CY) 2020 South Carolina Medicaid claims and encounters, as of December 31, 2020, processed with Cotiviti software.</p>	<p>The Healthcare Effectiveness Data and Information Set (HEDIS) is one of health care's most widely used performance improvement tools. This toolset includes measures for prenatal and postpartum care and is calculated for the Medicaid population using administrative Medicaid claims and encounters. This measure of postpartum care for the Medicaid population is calculated as the percentage of Medicaid enrolled women who gave birth in measurement year 2020 (MY20) and received prenatal care within the first trimester of pregnancy. MY20 ranges between October 8 of the year prior to October 7 of the measurement year.</p> <p>Statewide Mothers Who Received Prenatal Care Visits = 16,322 Eligible Population = 23,687 Statewide Medicaid Rate = 68.9%</p>

Metadata

<p>Rate of Postpartum Care Visits, 2020</p>	<p>Calendar Year (CY) 2020 South Carolina Medicaid claims and encounters, as of December 31, 2020, processed with Cotiviti software.</p>	<p>The Healthcare Effectiveness Data and Information Set (HEDIS) is one of health care’s most widely used performance improvement tools. This toolset includes measures for prenatal and postpartum care and is calculated for the Medicaid population using administrative Medicaid claims and encounters. This measure of postpartum care for the Medicaid population is calculated as the percentage of Medicaid enrolled women who gave birth in measurement year 2020 (MY20) and had a postpartum visit between 7 and 84 days after delivery. MY20 ranges between October 8 of the year prior to October 7 of the measurement year.</p> <p>Statewide Mothers Who Had Postpartum Care Visits = 15,192 Eligible Population = 23,687 Statewide Medicaid Rate = 64.1%</p>
<p>Maternal Conditions Among Hospitalized Mothers, 2019 Chronic Conditions</p>	<p>South Carolina Revenue and Fiscal Affairs Office (SC RFA), Health and Demographics, all-payer uniformed billing data for hospital discharges (UB-04) South Carolina Department of Health and Environmental Control (SCDHEC) Division of Biostatistics, Vital Statistics Data for Calendar Years (CY) 2018, 2019, and 2020 as of September, 2021.</p>	<p>This is a ZCTA level measure that represents the percentage of hospitalized mothers who delivered a baby in 2019 AND who had any emergency department (ED) visits or inpatient (IP) stays in the 12 months prior and/or 12 months after delivery with a primary or secondary diagnosis for cardiovascular disease (CVD), hypertension, diabetes, or obesity. **</p> <p><i>** Caveat - these chronic condition diagnoses come from ED visits and/or inpatient stays 12 months before, during, or 12 months after delivery. These counts will not include chronic condition diagnoses occurring only in an outpatient setting (e.g. primary care provider) and exclude pregnancy-induced conditions, such as gestational diabetes and preeclampsia.</i></p> <p>Statewide Hospital Deliveries, 2019 = 48,381 Deliveries with a Hospitalized Chronic Condition, 2019 = 11,361 Statewide Rate = 23.5%</p>

Metadata

<p>Maternal Conditions Among Hospitalized Mothers, 2019 Behavioral Health Conditions</p>	<p>South Carolina Revenue and Fiscal Affairs Office (SC RFA), Health and Demographics, all-payer uniformed billing data for hospital discharges (UB-04) South Carolina Department of Health and Environmental Control (SCDHEC) Division of Biostatistics, Vital Statistics Data for Calendar Years (CY) 2018, 2019, and 2020 as of September, 2021.</p>	<p>This is a ZCTA level measure that represents the percentage of hospitalized mothers who delivered a baby in 2019 AND who had any emergency department (ED) visits or inpatient (IP) stays in the 12 months prior and/or 12 months after delivery for substance abuse or mental health problems. **</p> <p><i>** Caveat - these behavioral health condition diagnoses come from ED visits and/or inpatient stays 12 months before, during, or 12 months after delivery. These counts will not include behavioral condition diagnoses occurring only in an outpatient setting (e.g. primary care provider).</i></p> <p>Statewide Hospital Deliveries, 2019 = 48,381 Deliveries with a Hospitalized Behavioral Health Condition, 2019 = 11,777 Statewide Rate = 24.3%</p>
<p>Maternal Conditions Among Hospitalized Mothers, 2019 Both (Chronic and Behavioral Health Conditions)</p>	<p>South Carolina Revenue and Fiscal Affairs Office (SC RFA), Health and Demographics, all-payer uniformed billing data for hospital discharges (UB-04) South Carolina Department of Health and Environmental Control (SCDHEC) Division of Biostatistics, Vital Statistics Data for Calendar Years (CY) 2018, 2019, and 2020 as of September, 2021.</p>	<p>This is a ZCTA level measure that represents the percentage of hospitalized mothers who delivered a baby in 2019 AND who had any emergency department (ED) visits or inpatient (IP) stay(s) in the 12 months prior and/or 12 months after delivery with a primary or secondary diagnosis for cardiovascular disease (CVD), hypertension, diabetes, or obesity AND substance abuse or mental health problems. **</p> <p><i>** Caveat - these chronic and behavioral health condition diagnoses come from ED visits and/or inpatient stays 12 months before, during, or 12 months after delivery. These counts will not include chronic and behavioral condition diagnoses occurring only in an outpatient setting (e.g. primary care provider).</i></p> <p>Statewide Hospital Deliveries, 2019 = 48,381 Deliveries with both a Hospitalized Chronic and Behavioral Health Condition, 2019 = 3,840 Statewide Rate = 7.9%</p>

Metadata

<p>Maternal Conditions Among Hospitalized Mothers, 2019 None (No Chronic or Behavioral Health Conditions)</p>	<p>South Carolina Revenue and Fiscal Affairs Office (SC RFA), Health and Demographics, all-payer uniformed billing data for hospital discharges (UB-04) South Carolina Department of Health and Environmental Control (SCDHEC) Division of Biostatistics, Vital Statistics Data for Calendar Years (CY) 2018, 2019, and 2020 as of September, 2021.</p>	<p>This is a ZCTA level measure that represents the percentage of hospitalized mothers who delivered a baby in in 2019 AND who had no emergency department (ED) visits or inpatient (IP) stays in the 12 months prior and/or 12 months after delivery with a primary or secondary diagnosis for either cardiovascular disease (CVD), hypertension, diabetes, or obesity OR substance abuse or mental health problems. **</p> <p><i>** Caveat - these diagnoses come from ED visits and/or inpatient stays 12 months before, during, or 12 months after delivery. These counts will not include diagnoses occurring only in an outpatient setting (e.g. primary care provider).</i></p> <p>Statewide Hospital Deliveries, 2019 = 48,381 Deliveries with No Chronic and No Behavioral Health Hospital Visits/Stays, 2019 = 29,083 Statewide Rate = 60.1%</p>
---	---	--

Metadata

<p>Index of Relative Rurality (IRR), 2019</p>	<p>University of South Carolina (UofSC) Institute for Families IHPR, February 2021.</p> <p>Original Paper: Waldorf, B. and A. Kim (2016). Defining and Measuring Rurality in the US: From Typologies to Continuous Indices. Commissioned Paper, Workshop on Rationalizing Rural Area Classifications, Washington, D.C., April 2015.</p>	<p>The Index of Relative Rurality (IRR) is a continuous, relative index that combines frequently used American Community Survey and Decennial census figures with other measures of rurality to create index values that adhere to a 0- 1 continuous scale, with 0 being the most urban and 1 being the most rural. As an index that treats rurality as a relative concept, it can be used to evaluate contextual changes over space and time.</p> <p>Also, being a seamless index, it can show finer-grained changes that may not be visible in threshold-based classifications, where all measurements in a class appear the same. A continuous relative index can provide greater nuance in data variation that may be lost when applying arbitrary class-breaks.</p> <p>This method of evaluating rurality is scalable to any geographic unit (i.e. county or ZCTA) for which appropriate input data can be obtained. It can also be adapted to use for bins, or map grid cells. For this GeoEScan®, the UofSC Institute for Families in Society calculated the IRR for each SC ZCTA using 2019 census data.</p> <p>This index is composed of four variables: 1 - Population, 2 - Population Density, 3 - Remoteness (distance from a metropolitan area), and 4- Built-Up Area (percent urban land area). All values are re-scaled to ensure scale compatibility and to release the initial units of measurement (i.e. miles). They are re-scaled onto bounded scales that range from 0 to 1, with "0" representing the most urban and "1" representing the most rural. The scale is relative to SC and cannot be compared to any other states.</p> <p>Equations are used to reconfigure each grouping of variables onto a 0-1 scale. The first equation is for variables 1, 2, and 4, where the values already suggest rurality as they decrease. A second equation is used for variable 3 (remoteness, distance to a metropolitan center), as it suggests the opposite.</p> <p>https://purr.purdue.edu/publications/2960/1</p>
---	---	--

Metadata

Overlays

Data Element	Source	Definition
Food Deserts	US Department of Agriculture Economic Research Service, 2019.	<p>Definition: A low-income tract with at least 500 people, or 33 percent of the population, living more than 1 mile (urban areas) or more than 10 miles (rural areas) from the nearest supermarket, supercenter, or large grocery store. In the Food Access Research Atlas, low access to healthy food is defined as being far from a supermarket, supercenter, or large grocery store. A census tract is considered to have low access if a significant number or share of individuals in the tract is far from a supermarket.</p> <p>Data sources: In the Food Access Research Atlas (formerly the Food Desert Locator), a directory of supermarkets, supercenters, and large grocery stores within the United States—including Alaska and Hawaii—was derived from merging the 2019 STARS (Store Tracking and Redemption System) directory of stores authorized to accept SNAP benefits and the 2019 Trade Dimensions TDLinx directory of stores.</p> <p>Population data are from the 2010 Census of Population and Housing. These data were aerially allocated down to ½-kilometer-square grids across the United States. For each ½-kilometer-square grid cell, the distance was calculated from its geographic center to the center of the grid cell with the nearest supermarket. Income data are from the 2014-18 American Community Survey's tract estimates. Rural or urban status is designated by the Bureau of the Census 2019 urban area definition.</p> <p>https://www.ers.usda.gov/data-products/food-access-research-atlas/documentation/</p> <p>https://www.ers.usda.gov/data-products/food-access-research-atlas/go-to-the-atlas/</p>

Metadata

<p>Social Vulnerability Index (SVI) - Top Quartile</p>	<p>Centers for Disease Control and Prevention, Agency for Toxic Substances and Disease Registry (CDC/ATSDR), 2018.</p>	<p>Every community must prepare for and respond to hazardous events, whether a natural disaster like a tornado or a disease outbreak, or an anthropogenic event such as a harmful chemical spill. The degree to which a community exhibits certain social conditions, including high poverty, low percentage of vehicle access, or crowded households, may affect that community's ability to prevent human suffering and financial loss in the event of disaster. These factors describe a community's social vulnerability.</p> <p>SVI provides specific socially and spatially relevant information to help public health officials and local planners better prepare communities to respond to emergency events such as severe weather, floods, disease outbreaks, or chemical exposure.</p> <p>For this GeoEScan®, the overall tract summary ranking variable (RPL_THEMES) was used; this field assigns a value to each census tract between 0 and 1, with 1 indicating highest vulnerability. The mapped overlay represents census tracts within the top 25%, i.e., above the 75th percentile of values, illustrating areas in South Carolina with the greatest social vulnerability.</p> <p>https://www.atsdr.cdc.gov/placeandhealth/svi/data_documentation_download.html</p>
<p>Driving Time to OB/GYN Providers</p>	<p>University of South Carolina (UofSC) Institute for Families (IFS), November 2021.</p>	<p>An obstetrician/gynecologist (Ob/Gyn) is a doctor who specializes in women's health. This overlay illustrates areas of South Carolina which require driving more than 15, 20, and 25 minutes to reach the closest Ob/Gyn provider (N = 791), including Ob/Gyn providers in North Carolina & Georgia within 30 miles of the South Carolina border. To create driving time areas, 791 overlapping, generalized service area polygons were created in ArcGIS Pro 2.8.3 using the Network Analyst toolset. Service areas rely on Esri StreetMap Premium's road network to solve the complex routing problem of determining reachable areas. This output was used to create driving time to Ob/Gyn provider areas by inverting 15, 20, and 25-minute drive time service areas within South Carolina.</p>

Metadata

<p>Driving Time to Perinatal Hospitals</p>	<p>University of South Carolina (UofSC) Institute for Families (IFS), November 2021.</p>	<p>A perinatal hospital is a hospital defined by the level of care it can provide to pregnant women. This overlay illustrates areas of South Carolina (SC) which require driving more than 30 minutes and more than 45 minutes to reach the closest South Carolina perinatal-rated hospital (N = 40) and does not include hospitals in Georgia or North Carolina. To create driving time areas, 40 overlapping, generalized service area polygons around each of the 40 perinatal hospitals in SC were created in ArcGIS Pro 2.8.3 using the Network Analyst toolset. Service areas rely on Esri StreetMap Premium's road network to solve the complex routing problem of determining reachable areas. This output was used to create driving time to perinatal care areas by inverting 30-minute and 45-minute drive time service areas within SC.</p> <p>See point feature definition of South Carolina Hospitals by Perinatal Level and Baby-Friendly Status to get more information about perinatal hospitals in SC.</p>
<p>Index of Relative Rurality (IRR), 2019</p> <p>Rural Suburban Urban</p>	<p>University of South Carolina (UofSC) Institute for Families IHP, February 2021.</p> <p>Original Paper: Waldorf, B. and A. Kim (2016). Defining and Measuring Rurality in the US: From Typologies to Continuous Indices. Commissioned Paper, Workshop on Rationalizing Rural Area Classifications, Washington, D.C., April 2015.</p>	<p>The Index of Relative Rurality (IRR) is a continuous, relative index that combines frequently used census figures with other measures of rurality to create index values that adhere to a 0 - 1 continuous scale, with 0 being the most urban and 1 being the most rural. The IRR basemap's values are based on 2019 ZCTA IRR values.</p> <p>Rural, Suburban, and Urban overlays represent 2019 ZCTA Index of Relative Rurality (IRR) natural breaks classified as 0-0.64 (Urban), 0.65 - 0.83 (Suburban), and 0.84 - 1 (Rural). IRR is also represented in its continuous format as a basemap.</p> <p>See Baselayer IRR section for more information.</p>

Metadata

Facilities

Data Element	Source	Definition
South Carolina Hospitals by Perinatal Level and Baby-Friendly Status	South Carolina Department of Health and Environmental Control (SCDHEC), July 2021; Baby-Friendly USA, accessed July 2021.	<p>Shows all hospitals (general hospitals and otherwise) that have a perinatal level and a visual cue for Baby-Friendly hospitals. A perinatal level is a designation for hospitals based on the level of skill and technology available to care for moms and babies. A level I hospital provides services for uncomplicated pregnancies and physiologically stable infants born at 35 weeks or later while level III and IV indicate the highest level of care for high-risk moms and high-risk babies. Mothers and babies needing higher care because of complications are transferred to the appropriate higher-level facility. Perinatal levels are established by SCDHEC.</p> <p>More information can be found here: https://scdhec.gov/sites/default/files/media/document/R.61-16.pdf.</p> <p>Baby-Friendly hospitals are those that have made a commitment to improve infant feeding policies, training and practices and have been granted a license to use the Baby-Friendly certification mark.</p>
OB/GYN Locations	South Carolina Medicaid Management Information System (SC MMIS), June 2021.	These are locations of all Medicaid-enrolled Obstetrics and Gynecology (Ob/Gyn) providers in SC.
Hospital Births by County, 2020	South Carolina Revenue and Fiscal Affairs Office (SC RFA), Health and Demographics, all-payer uniformed billing data for hospital discharges (UB-04). South Carolina Department of Health and Environmental Control (SCDHEC) Division of Biostatistics, Vital Statistics Data for Calendar Year (CY) 2020 as of October 2021.	Shows the number of babies born in South Carolina hospitals in each county based on mother's residence. Symbols are sized based on number of hospital births in the county and classified into natural breaks.

Metadata

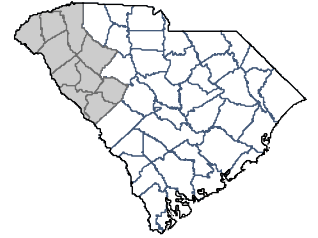
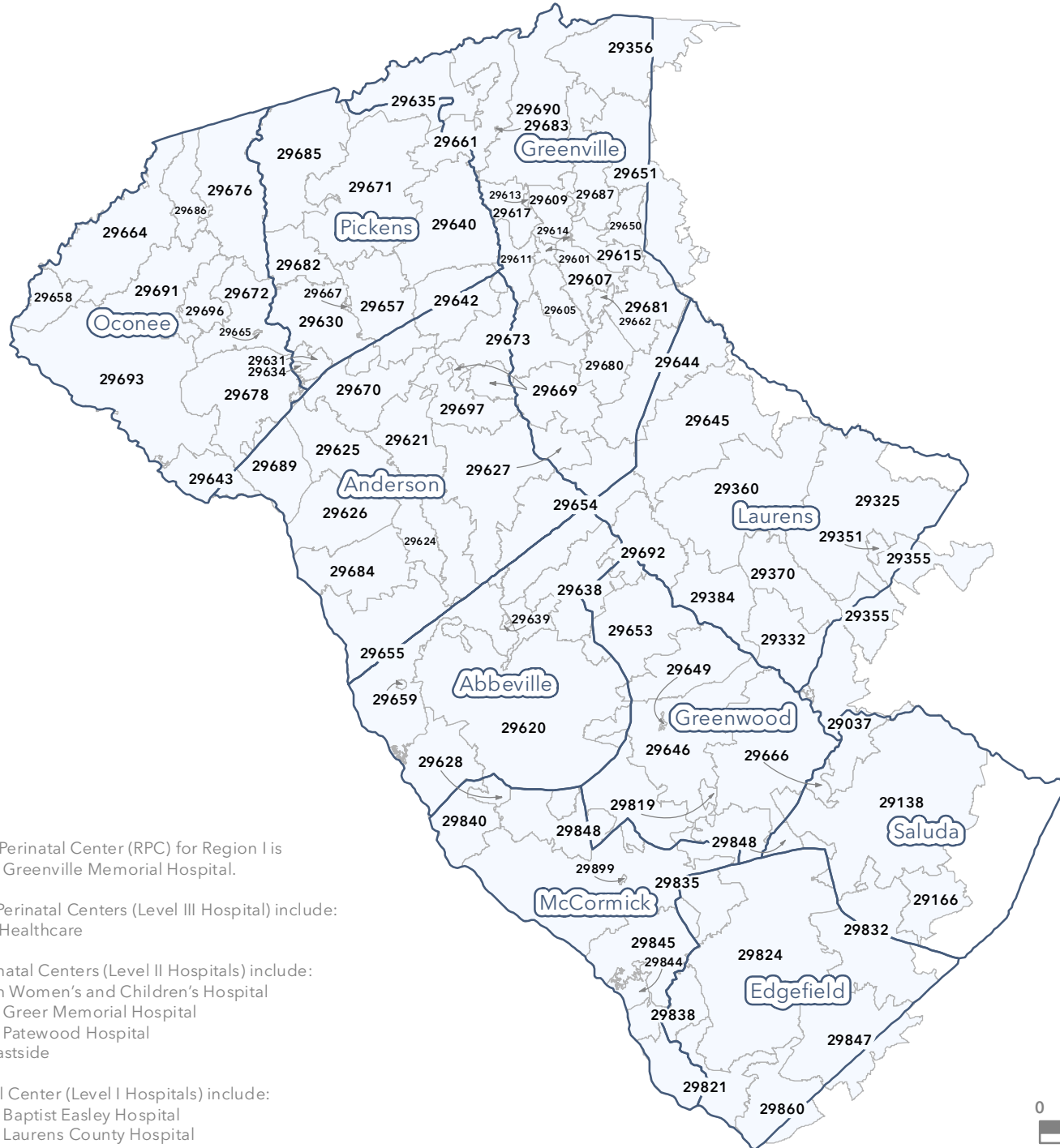
Hospital Births by County and Payor, 2020	South Carolina Revenue and Fiscal Affairs Office (SC RFA), Health and Demographics, all-payer uniformed billing data for hospital discharges (UB-04). South Carolina Department of Health and Environmental Control (SCDHEC) Division of Biostatistics, Vital Statistics Data for Calendar Year (CY) 2020 as of October 2021.	Shows the proportion of SC hospital births in each county by paid for by Medicaid, Private sources (e.g., commercial insurance or health maintenance organization), and Other sources (e.g., self-pay, indigent, Medicare, or worker's compensation). Proportions are visualized using pie charts. The size of the pie chart itself is graduated based on the total number of hospital births in the County and classified into natural breaks.
---	---	---

Metadata

Geographic Boundaries

Data Element	Source	Definition
South Carolina Highways	US Census Bureau, 2010.	Major highways and US Interstates within South Carolina.
South Carolina Perinatal Regions	South Carolina Department of Health and Environmental Control (SCDHEC), 2021.	<p>Perinatal regions were developed by SCDHEC to address the need for high quality, risk-appropriate, cost-effective perinatal health care. Regionalization provides a coordinated system of perinatal care for a well-defined population group. Each region has a regional perinatal center (RPC), and all other perinatal hospitals in a respective region maintain a relationship with its designated RPC for consultation, transport, and continuing education. Patients are transferred to the appropriate RPC when appropriate if beds are available. South Carolina has 5 perinatal regions.</p> <p>More information can be found here: https://scdhec.gov/sites/default/files/media/document/R.61-16.pdf.</p>
South Carolina Counties	US Census Bureau, 2010.	South Carolina county boundaries.
South Carolina ZIP Code Tabulation Areas	US Census Bureau, 2010.	<p>ZIP Code Tabulation Areas (ZCTAs) are approximate area representations of U.S. Postal Service (USPS) five-digit ZIP Code service areas that the Census Bureau creates using whole blocks to present statistical data from censuses and surveys. Multiple ZIP Codes may be associated with a single ZCTA. For example, South Carolina ZIP Codes 29401 and 29402 both are included in ZCTA 29401. The USPS associates a place name with each ZCTA (identified in the ZIP Code Tabulation Area Information Table and Locator Table).</p>

SC DHEC Perinatal Region I ZIP Code Tabulation Area (ZCTA) Locator Map



DHEC Perinatal Region I includes the following counties: Abbeville, Anderson, Edgefield, Greenville, Greenwood, Laurens, McCormick, Oconee, Pickens, and Saluda counties.

The Regional Perinatal Center (RPC) for Region I is Prisma Health Greenville Memorial Hospital.

Subspecialty Perinatal Centers (Level III Hospital) include: Self Regional Healthcare

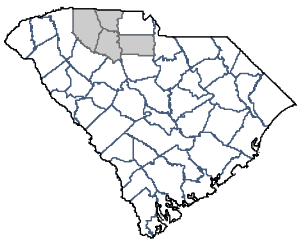
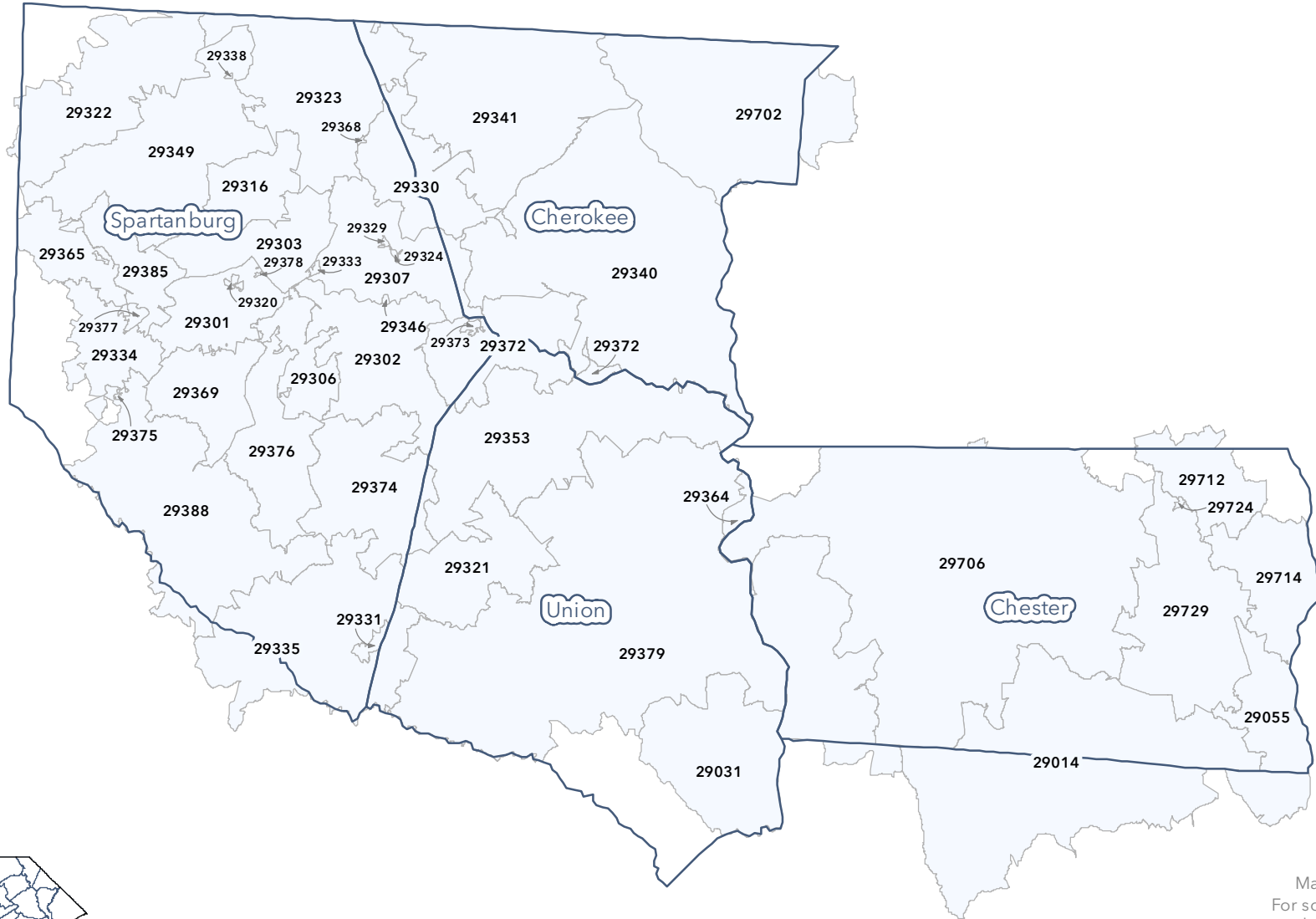
Specialty Perinatal Centers (Level II Hospitals) include: AnMed Health Women's and Children's Hospital, Prisma Health Greer Memorial Hospital, Prisma Health Patewood Hospital, St. Francis - Eastside

Basic Perinatal Center (Level I Hospitals) include: Prisma Health Baptist Easley Hospital, Prisma Health Laurens County Hospital, Prisma Health Oconee Memorial Hospital

Map created December 2021. For source information and other notes, please see attached metadata.



SC DHEC Perinatal Region II ZIP Code Tabulation Area (ZCTA) Locator Map



DHEC Perinatal Region II includes the following counties: Cherokee, Chester, Spartanburg, and Union counties.

The Regional Perinatal Center (RPC) for Region II is Spartanburg Medical Center.

Subspecialty Perinatal Centers (Level III Hospital) include: None

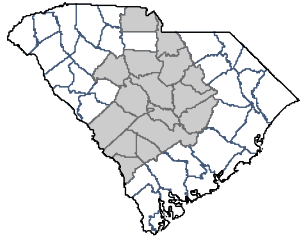
Specialty Perinatal Centers (Level II Hospitals) include: None

Basic Perinatal Center (Level I Hospitals) include: None

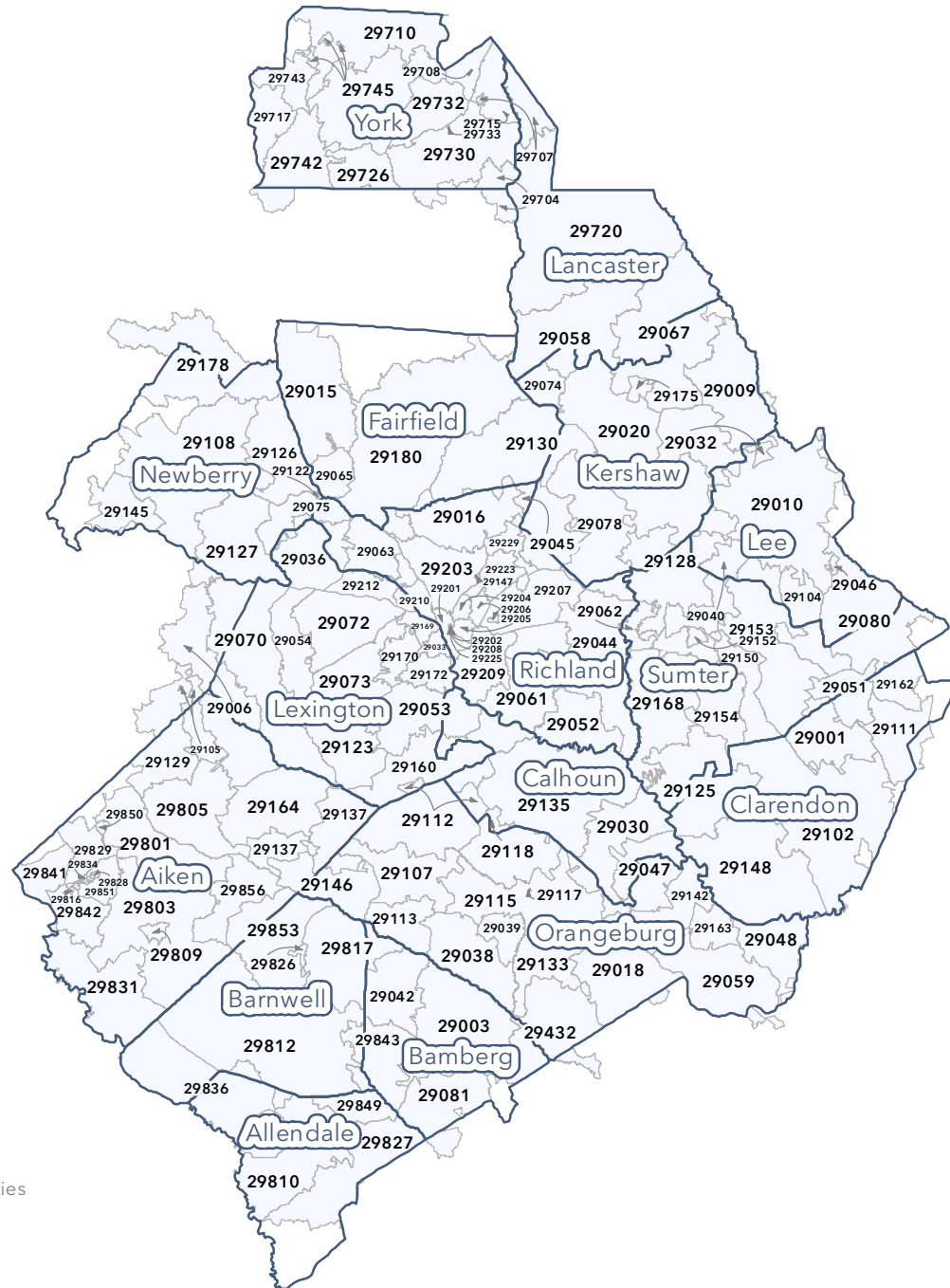
Map created December 2021.
For source information and other notes, please see attached metadata.



SC DHEC Perinatal Region III ZIP Code Tabulation Area (ZCTA) Locator Map



DHEC Perinatal Region III includes the following counties: Aiken, Allendale, Bamberg, Barnwell, Calhoun, Clarendon, Fairfield, Kershaw, Lancaster, Lee, Lexington, Newberry, Orangeburg, Richland, Sumter, and York counties.



The Regional Perinatal Center (RPC) for Region III is Prisma Health Richland.

Subspecialty Perinatal Centers (Level III Hospital) include:
Piedmont Medical Center
Prisma Health Baptist

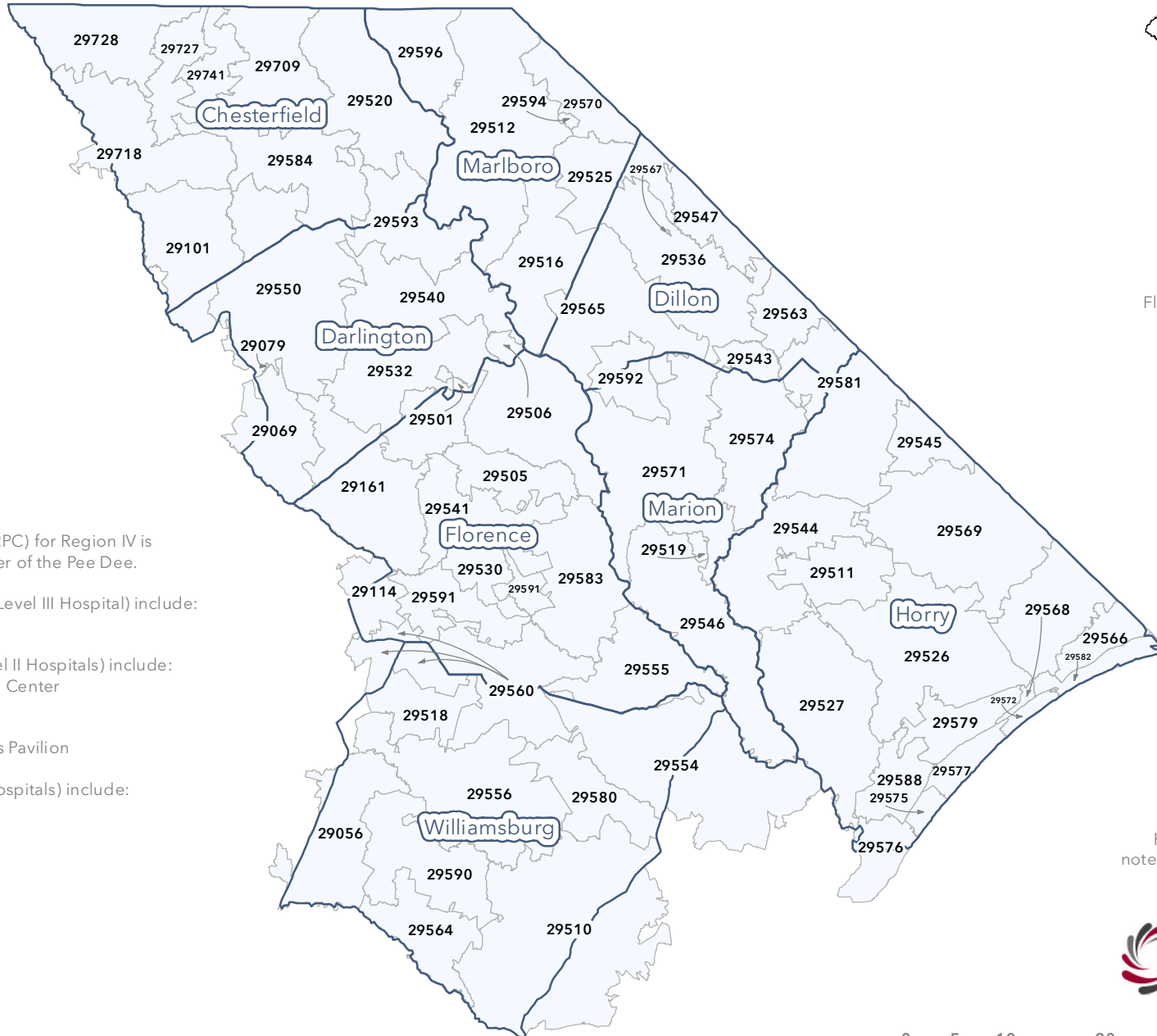
Specialty Perinatal Centers (Level II Hospitals) include:
Aiken Regional Medical Centers
Lexington Medical Center
MUSC Health Lancaster Medical Center
Prisma Health Baptist Parkridge
Prisma Health Tuomey Hospital
Regional Medical Center of Orangeburg & Calhoun Counties

Basic Perinatal Center (Level I Hospitals) include:
KershawHealth
McLeod Health Clarendon
Newberry County Memorial Hospital

Map created December 2021.
For source information and other notes, please see attached metadata.



SC DHEC Perinatal Region IV ZIP Code Tabulation Area (ZCTA) Locator Map



DHEC Perinatal Region IV includes the following counties: Chesterfield, Darlington, Dillon, Florence, Horry, Marion, Marlboro, and Williamsburg counties.

The Regional Perinatal Center (RPC) for Region IV is McLeod Regional Medical Center of the Pee Dee.

Subspecialty Perinatal Centers (Level III Hospital) include: None

Specialty Perinatal Centers (Level II Hospitals) include:
 Carolina Pines Regional Medical Center
 Conway Hospital
 Grand Strand Medical Center
 MUSC Health Florence Women's Pavilion

Basic Perinatal Center (Level I Hospitals) include:
 McLeod Health Loris
 McLeod Health Dillon

Map created December 2021.
 For source information and other notes, please see attached metadata.



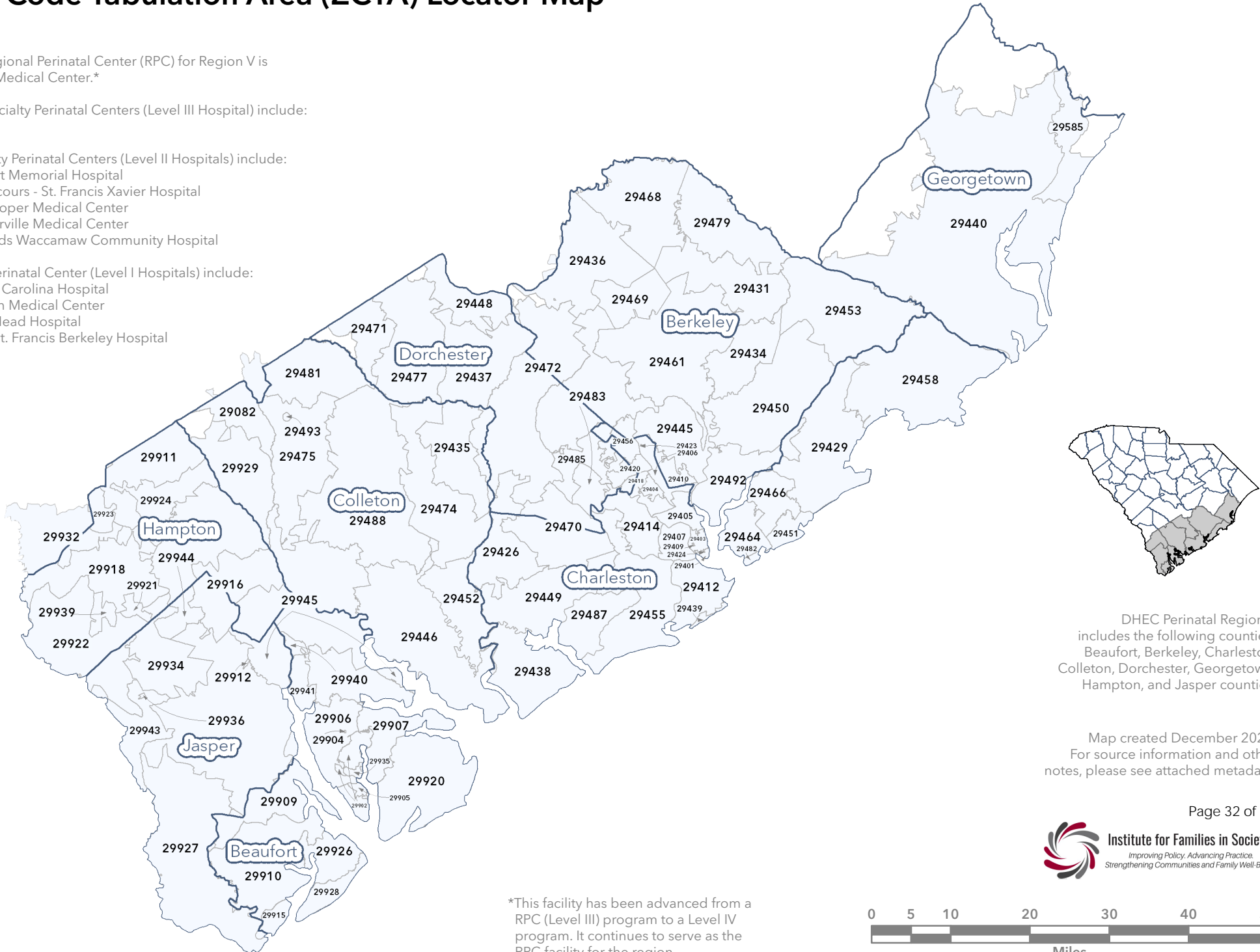
SC DHEC Perinatal Region V ZIP Code Tabulation Area (ZCTA) Locator Map

The Regional Perinatal Center (RPC) for Region V is MUSC Medical Center.*

Subspecialty Perinatal Centers (Level III Hospital) include:
None

Specialty Perinatal Centers (Level II Hospitals) include:
Beaufort Memorial Hospital
Bon Secours - St. Francis Xavier Hospital
East Cooper Medical Center
Summerville Medical Center
Tidelands Waccamaw Community Hospital

Basic Perinatal Center (Level I Hospitals) include:
Coastal Carolina Hospital
Colleton Medical Center
Hilton Head Hospital
Roper St. Francis Berkeley Hospital



DHEC Perinatal Region V includes the following counties:
Beaufort, Berkeley, Charleston, Colleton, Dorchester, Georgetown, Hampton, and Jasper counties.

Map created December 2021.
For source information and other notes, please see attached metadata.

*This facility has been advanced from a RPC (Level III) program to a Level IV program. It continues to serve as the RPC facility for the region.



ZIP Code Tabulation Area (ZCTA) Locator Table

ZCTA	ZCTA Name	Urban/Rural Classification	Perinatal Region	Associated ZIP Codes				Associated Counties			
				ZIP 1	ZIP 2	ZIP 3	ZIP 4	County 1	County 2	County 3	County 4
29001	Alcolu	Rural	III	29001	-	-	-	Clarendon	Sumter	-	-
29003	Bamberg	Suburban	III	29003	-	-	-	Bamberg	-	-	-
29006	Batesburg	Rural	III	29006	-	-	-	Aiken	Lexington	Saluda	-
29009	Bethune	Rural	III	29009	-	-	-	Chesterfield	Kershaw	Lee	-
29010	Bishopville	Rural	III	29010	-	-	-	Kershaw	Lee	-	-
29014	Blackstock	Rural	II	29014	-	-	-	Chester	Fairfield	-	-
29015	Blair	Rural	III	29015	-	-	-	Fairfield	-	-	-
29016	Blythewood	Suburban	III	29016	-	-	-	Fairfield	Richland	-	-
29018	Bowman	Rural	III	29018	-	-	-	Dorchester	Orangeburg	-	-
29020	Camden	Suburban	III	29020	29021	-	-	Kershaw	Lee	-	-
29030	Cameron	Rural	III	29030	-	-	-	Calhoun	Orangeburg	-	-
29031	Carlisle	Rural	II	29031	-	-	-	Chester	Fairfield	Union	-
29032	Cassatt	Rural	III	29032	-	-	-	Kershaw	Lee	-	-
29033	Cayce	Urban	III	29033	-	-	-	Lexington	-	-	-
29036	Chapin	Suburban	III	29036	29177	-	-	Lexington	Newberry	Richland	-
29037	Chappells	Rural	I	29037	-	-	-	Newberry	Saluda	-	-
29038	Cope	Rural	III	29038	-	-	-	Orangeburg	-	-	-
29039	Cordova	Suburban	III	29039	-	-	-	Orangeburg	-	-	-
29040	Dalzell	Suburban	III	29040	-	-	-	Lee	Sumter	-	-
29042	Denmark	Suburban	III	29042	-	-	-	Bamberg	-	-	-
29044	Eastover	Rural	III	29044	-	-	-	Richland	-	-	-
29045	Elgin	Suburban	III	29045	-	-	-	Kershaw	Richland	-	-
29046	Elliott	Rural	III	29046	-	-	-	Lee	-	-	-
29047	Elloree	Rural	III	29047	-	-	-	Calhoun	Orangeburg	-	-
29048	Eutawville	Rural	III	29048	-	-	-	Orangeburg	-	-	-
29051	Gable	Rural	III	29051	29143	-	-	Clarendon	Sumter	-	-
29052	Gadsden	Rural	III	29052	-	-	-	Richland	-	-	-
29053	Gaston	Suburban	III	29053	-	-	-	Calhoun	Lexington	-	-
29054	Gilbert	Rural	III	29054	-	-	-	Lexington	-	-	-

ZIP Code Tabulation Area (ZCTA) Locator Table

ZCTA	ZCTA Name	Urban/Rural Classification	Perinatal Region	Associated ZIP Codes				Associated Counties			
				ZIP 1	ZIP 2	ZIP 3	ZIP 4	County 1	County 2	County 3	County 4
29055	Great Falls	Rural	II	29055	-	-	-	Chester	Fairfield	-	-
29056	Greenville	Rural	IV	29056	-	-	-	Clarendon	Williamsburg	-	-
29058	Heath Springs	Rural	III	29058	-	-	-	Kershaw	Lancaster	-	-
29059	Holly Hill	Rural	III	29059	-	-	-	Berkeley	Orangeburg	-	-
29061	Hopkins	Rural	III	29061	-	-	-	Richland	-	-	-
29062	Horatio	Rural	III	29062	-	-	-	Sumter	-	-	-
29063	Irmo	Urban	III	29002	29063	-	-	Lexington	Richland	-	-
29065	Jenkinsville	Rural	III	29065	-	-	-	Fairfield	-	-	-
29067	Kershaw	Rural	III	29067	-	-	-	Kershaw	Lancaster	-	-
29069	Lamar	Rural	IV	29069	-	-	-	Darlington	Lee	-	-
29070	Leesville	Rural	III	29070	-	-	-	Lexington	Saluda	-	-
29072	Lexington	Urban	III	29071	29072	-	-	Lexington	-	-	-
29073	Lexington	Urban	III	29073	-	-	-	Lexington	-	-	-
29074	Liberty Hill	Rural	III	29074	-	-	-	Kershaw	-	-	-
29075	Little Mountain	Rural	III	29075	-	-	-	Lexington	Newberry	Richland	-
29078	Lugoff	Suburban	III	29078	-	-	-	Kershaw	Richland	-	-
29079	Lydia	Rural	IV	29079	-	-	-	Darlington	-	-	-
29080	Lynchburg	Rural	III	29080	-	-	-	Lee	Sumter	-	-
29081	Ehrhardt	Rural	III	29081	-	-	-	Bamberg	Colleton	-	-
29082	Lodge	Rural	V	29082	-	-	-	Bamberg	Colleton	-	-
29101	McBee	Rural	IV	29101	-	-	-	Chesterfield	Darlington	-	-
29102	Manning	Rural	III	29041	29102	-	-	Clarendon	-	-	-
29104	Mayesville	Rural	III	29104	-	-	-	Lee	Sumter	-	-
29105	Monetta	Rural	III	29105	-	-	-	Aiken	Saluda	-	-
29107	Neeses	Rural	III	29107	-	-	-	Orangeburg	-	-	-
29108	Newberry	Suburban	III	29108	-	-	-	Newberry	-	-	-
29111	New Zion	Rural	III	29111	-	-	-	Clarendon	Williamsburg	-	-
29112	North	Rural	III	29112	-	-	-	Calhoun	Lexington	Orangeburg	-
29113	Norway	Rural	III	29113	-	-	-	Orangeburg	-	-	-

ZIP Code Tabulation Area (ZCTA) Locator Table

ZCTA	ZCTA Name	Urban/Rural Classification	Perinatal Region	Associated ZIP Codes				Associated Counties			
				ZIP 1	ZIP 2	ZIP 3	ZIP 4	County 1	County 2	County 3	County 4
29114	Olanta	Rural	IV	29114	-	-	-	Clarendon	Florence	Sumter	-
29115	Orangeburg	Suburban	III	29115	29116	-	-	Orangeburg	-	-	-
29117	Orangeburg	Urban	III	29117	-	-	-	Orangeburg	-	-	-
29118	Orangeburg	Suburban	III	29118	-	-	-	Calhoun	Orangeburg	-	-
29122	Peak	Rural	III	29122	-	-	-	Newberry	-	-	-
29123	Pelion	Rural	III	29123	-	-	-	Lexington	-	-	-
29125	Pinewood	Rural	III	29125	-	-	-	Clarendon	Sumter	-	-
29126	Pomaria	Rural	III	29126	-	-	-	Newberry	-	-	-
29127	Prosperity	Rural	III	29127	-	-	-	Newberry	Saluda	-	-
29128	Rembert	Rural	III	29128	-	-	-	Kershaw	Lee	Sumter	-
29129	Ridge Spring	Rural	III	29129	-	-	-	Aiken	Edgefield	Saluda	-
29130	Ridgeway	Rural	III	29130	-	-	-	Fairfield	Kershaw	Richland	-
29133	Rowesville	Rural	III	29133	-	-	-	Orangeburg	-	-	-
29135	Saint Matthews	Rural	III	29135	-	-	-	Calhoun	Orangeburg	-	-
29137	Salley	Rural	III	29137	-	-	-	Aiken	Orangeburg	-	-
29138	Saluda	Rural	I	29138	-	-	-	Edgefield	Greenwood	Saluda	-
29142	Santee	Rural	III	29142	-	-	-	Orangeburg	-	-	-
29145	Silverstreet	Rural	III	29145	-	-	-	Newberry	-	-	-
29146	Springfield	Rural	III	29146	-	-	-	Aiken	Orangeburg	-	-
29147	State Park	Rural	III	29147	-	-	-	Richland	-	-	-
29148	Summerton	Rural	III	29148	-	-	-	Clarendon	-	-	-
29150	Sumter	Urban	III	29150	29151	-	-	Sumter	-	-	-
29152	Shaw AFB	Urban	III	29152	-	-	-	Sumter	-	-	-
29153	Sumter	Suburban	III	29153	-	-	-	Lee	Sumter	-	-
29154	Sumter	Urban	III	29154	-	-	-	Sumter	-	-	-
29160	Swansea	Rural	III	29160	-	-	-	Calhoun	Lexington	-	-
29161	Timmonsville	Rural	IV	29161	-	-	-	Darlington	Florence	-	-
29162	Turbeville	Rural	III	29162	-	-	-	Clarendon	Sumter	-	-
29163	Vance	Rural	III	29163	-	-	-	Orangeburg	-	-	-

ZIP Code Tabulation Area (ZCTA) Locator Table

ZCTA	ZCTA Name	Urban/Rural Classification	Perinatal Region	Associated ZIP Codes				Associated Counties			
				ZIP 1	ZIP 2	ZIP 3	ZIP 4	County 1	County 2	County 3	County 4
29164	Wagener	Rural	III	29164	-	-	-	Aiken	-	-	-
29166	Ward	Rural	I	29166	-	-	-	Saluda	-	-	-
29168	Wedgefield	Rural	III	29168	-	-	-	Sumter	-	-	-
29169	West Columbia	Urban	III	29169	29171	-	-	Lexington	-	-	-
29170	West Columbia	Urban	III	29170	-	-	-	Lexington	-	-	-
29172	West Columbia	Urban	III	29172	-	-	-	Lexington	-	-	-
29175	Westville	Rural	III	29175	-	-	-	Kershaw	-	-	-
29178	Whitmire	Rural	III	29178	-	-	-	Laurens	Newberry	Union	-
29180	Winnsboro	Rural	III	29132	29180	-	-	Fairfield	Richland	-	-
29201	Columbia	Urban	III	29201	29211	29214	29215	Richland	-	-	-
29202	Columbia	Urban	III	29202	-	-	-	Richland	-	-	-
29203	Columbia	Urban	III	29203	29230	-	-	Richland	-	-	-
29204	Columbia	Urban	III	29204	29240	-	-	Richland	-	-	-
29205	Columbia	Urban	III	29205	29250	-	-	Richland	-	-	-
29206	Columbia	Urban	III	29206	29260	-	-	Richland	-	-	-
29207	Columbia	Urban	III	29207	-	-	-	Richland	-	-	-
29208	Columbia	Urban	III	29208	-	-	-	Richland	-	-	-
29209	Columbia	Urban	III	29209	29290	-	-	Richland	-	-	-
29210	Columbia	Urban	III	29210	29221	29226	29227	Lexington	Richland	-	-
29212	Columbia	Urban	III	29212	-	-	-	Lexington	Richland	-	-
29223	Columbia	Urban	III	29219	29223	29224	-	Richland	-	-	-
29225	Columbia	Urban	III	29225	-	-	-	Richland	-	-	-
29229	Columbia	Urban	III	29229	-	-	-	Richland	-	-	-
29301	Spartanburg	Urban	II	29301	29336	-	-	Spartanburg	-	-	-
29302	Spartanburg	Urban	II	29302	29386	-	-	Spartanburg	-	-	-
29303	Spartanburg	Urban	II	29303	29305	-	-	Spartanburg	-	-	-
29306	Spartanburg	Urban	II	29304	29306	29319	-	Spartanburg	-	-	-
29307	Spartanburg	Urban	II	29307	-	-	-	Cherokee	Spartanburg	-	-
29316	Spartanburg	Urban	II	29316	29318	-	-	Spartanburg	-	-	-

ZIP Code Tabulation Area (ZCTA) Locator Table

ZCTA	ZCTA Name	Urban/Rural Classification	Perinatal Region	Associated ZIP Codes				Associated Counties			
				ZIP 1	ZIP 2	ZIP 3	ZIP 4	County 1	County 2	County 3	County 4
29320	Arcadia	Urban	II	29320	-	-	-	Spartanburg	-	-	-
29321	Buffalo	Rural	II	29321	-	-	-	Union	-	-	-
29322	Campobello	Rural	II	29322	29348	-	-	Greenville	Spartanburg	-	-
29323	Chesnee	Rural	II	29323	-	-	-	Cherokee	Spartanburg	-	-
29324	Clifton	Urban	II	29324	-	-	-	Spartanburg	-	-	-
29325	Clinton	Suburban	I	29325	-	-	-	Laurens	-	-	-
29329	Converse	Urban	II	29329	-	-	-	Spartanburg	-	-	-
29330	Cowpens	Rural	II	29330	-	-	-	Cherokee	Spartanburg	-	-
29331	Cross Anchor	Rural	II	29331	-	-	-	Spartanburg	-	-	-
29332	Cross Hill	Rural	I	29332	-	-	-	Laurens	Newberry	-	-
29333	Drayton	Urban	II	29333	-	-	-	Spartanburg	-	-	-
29334	Duncan	Urban	II	29334	29390	29391	29698	Spartanburg	-	-	-
29335	Enoree	Rural	II	29335	-	-	-	Laurens	Spartanburg	Union	-
29338	Fingerville	Rural	II	29338	-	-	-	Spartanburg	-	-	-
29340	Gaffney	Suburban	II	29340	-	-	-	Cherokee	-	-	-
29341	Gaffney	Suburban	II	29341	29342	-	-	Cherokee	-	-	-
29346	Glendale	Urban	II	29346	-	-	-	Spartanburg	-	-	-
29349	Inman	Suburban	II	29349	-	-	-	Spartanburg	-	-	-
29351	Joanna	Urban	I	29351	-	-	-	Laurens	-	-	-
29353	Jonesville	Rural	II	29353	29395	-	-	Union	-	-	-
29355	Kinards	Rural	I	29355	-	-	-	Laurens	Newberry	-	-
29356	Landrum	Rural	I	29356	-	-	-	Greenville	Spartanburg	-	-
29360	Laurens	Suburban	I	29360	-	-	-	Laurens	-	-	-
29364	Lockhart	Rural	II	29364	-	-	-	Union	-	-	-
29365	Lyman	Urban	II	29365	-	-	-	Spartanburg	-	-	-
29368	Mayo	Urban	II	29368	-	-	-	Spartanburg	-	-	-
29369	Moore	Urban	II	29369	-	-	-	Spartanburg	-	-	-
29370	Mountville	Rural	I	29370	-	-	-	Laurens	-	-	-
29372	Pacolet	Rural	II	29372	-	-	-	Cherokee	Spartanburg	Union	-

ZIP Code Tabulation Area (ZCTA) Locator Table

ZCTA	ZCTA Name	Urban/Rural Classification	Perinatal Region	Associated ZIP Codes				Associated Counties			
				ZIP 1	ZIP 2	ZIP 3	ZIP 4	County 1	County 2	County 3	County 4
29373	Pacolet Mills	Rural	II	29373	-	-	-	Spartanburg	-	-	-
29374	Pauline	Rural	II	29374	-	-	-	Spartanburg	Union	-	-
29375	Reidville	Urban	II	29375	-	-	-	Spartanburg	-	-	-
29376	Roebuck	Suburban	II	29376	-	-	-	Spartanburg	-	-	-
29377	Startex	Urban	II	29377	-	-	-	Spartanburg	-	-	-
29378	Una	Urban	II	29378	-	-	-	Spartanburg	-	-	-
29379	Union	Suburban	II	29379	-	-	-	Union	-	-	-
29384	Waterloo	Rural	I	29384	-	-	-	Laurens	-	-	-
29385	Wellford	Urban	II	29385	-	-	-	Spartanburg	-	-	-
29388	Woodruff	Rural	II	29388	-	-	-	Laurens	Spartanburg	-	-
29401	Charleston	Urban	V	29401	29402	-	-	Charleston	-	-	-
29403	Charleston	Urban	V	29403	29413	29425	-	Charleston	-	-	-
29404	Charleston	Urban	V	29404	29416	-	-	Charleston	-	-	-
29405	North Charleston	Urban	V	29405	29415	-	-	Charleston	-	-	-
29406	Charleston	Urban	V	29406	29419	-	-	Berkeley	Charleston	-	-
29407	Charleston	Urban	V	29407	29417	-	-	Charleston	-	-	-
29409	Charleston	Urban	V	29409	-	-	-	Charleston	-	-	-
29410	Hanahan	Urban	V	29410	-	-	-	Berkeley	-	-	-
29412	Charleston	Urban	V	29412	29422	-	-	Charleston	-	-	-
29414	Charleston	Urban	V	29414	-	-	-	Charleston	Dorchester	-	-
29418	North Charleston	Urban	V	29418	-	-	-	Charleston	Dorchester	-	-
29420	North Charleston	Urban	V	29420	-	-	-	Charleston	Dorchester	-	-
29423	Charleston	Urban	V	29423	-	-	-	Charleston	-	-	-
29424	Charleston	Urban	V	29424	-	-	-	Charleston	-	-	-
29426	Adams Run	Rural	V	29426	-	-	-	Charleston	Dorchester	-	-
29429	Awendaw	Rural	V	29429	-	-	-	Charleston	-	-	-
29431	Bonneau	Rural	V	29431	-	-	-	Berkeley	-	-	-
29432	Branchville	Rural	III	29432	-	-	-	Bamberg	Dorchester	Orangeburg	-
29434	Cordesville	Rural	V	29434	-	-	-	Berkeley	-	-	-

ZIP Code Tabulation Area (ZCTA) Locator Table

ZCTA	ZCTA Name	Urban/Rural Classification	Perinatal Region	Associated ZIP Codes				Associated Counties			
				ZIP 1	ZIP 2	ZIP 3	ZIP 4	County 1	County 2	County 3	County 4
29435	Cottageville	Rural	V	29435	-	-	-	Colleton	-	-	-
29436	Cross	Rural	V	29436	-	-	-	Berkeley	Orangeburg	-	-
29437	Dorchester	Rural	V	29437	-	-	-	Dorchester	-	-	-
29438	Edisto Island	Rural	V	29438	-	-	-	Charleston	Colleton	-	-
29439	Folly Beach	Urban	V	29439	-	-	-	Charleston	-	-	-
29440	Georgetown	Suburban	V	29440	29442	-	-	Georgetown	-	-	-
29445	Goose Creek	Urban	V	29445	-	-	-	Berkeley	-	-	-
29446	Green Pond	Rural	V	29446	-	-	-	Colleton	-	-	-
29448	Harleyville	Rural	V	29448	-	-	-	Dorchester	-	-	-
29449	Hollywood	Rural	V	29449	-	-	-	Charleston	-	-	-
29450	Huger	Rural	V	29450	-	-	-	Berkeley	Charleston	-	-
29451	Isle of Palms	Urban	V	29451	-	-	-	Charleston	-	-	-
29452	Jacksonboro	Rural	V	29452	-	-	-	Colleton	-	-	-
29453	Jamestown	Rural	V	29453	-	-	-	Berkeley	-	-	-
29455	Johns Island	Rural	V	29455	29457	-	-	Charleston	-	-	-
29456	Ladson	Urban	V	29456	-	-	-	Berkeley	Charleston	Dorchester	-
29458	McClellanville	Rural	V	29458	-	-	-	Charleston	-	-	-
29461	Moncks Corner	Suburban	V	29430	29461	-	-	Berkeley	-	-	-
29464	Mount Pleasant	Urban	V	29464	29465	-	-	Charleston	-	-	-
29466	Mount Pleasant	Urban	V	29466	-	-	-	Charleston	-	-	-
29468	Pineville	Rural	V	29468	-	-	-	Berkeley	-	-	-
29469	Pinopolis	Rural	V	29469	-	-	-	Berkeley	-	-	-
29470	Ravenel	Rural	V	29470	-	-	-	Charleston	Dorchester	-	-
29471	Reevesville	Rural	V	29471	-	-	-	Dorchester	-	-	-
29472	Ridgeville	Rural	V	29472	-	-	-	Berkeley	Colleton	Dorchester	-
29474	Round O	Rural	V	29474	-	-	-	Colleton	-	-	-
29475	Ruffin	Rural	V	29475	-	-	-	Colleton	-	-	-
29477	Saint George	Rural	V	29447	29477	-	-	Dorchester	-	-	-
29479	Saint Stephen	Rural	V	29476	29479	-	-	Berkeley	-	-	-

ZIP Code Tabulation Area (ZCTA) Locator Table

ZCTA	ZCTA Name	Urban/Rural Classification	Perinatal Region	Associated ZIP Codes				Associated Counties			
				ZIP 1	ZIP 2	ZIP 3	ZIP 4	County 1	County 2	County 3	County 4
29481	Smoaks	Rural	V	29481	-	-	-	Bamberg	Colleton	-	-
29482	Sullivans Island	Urban	V	29482	-	-	-	Charleston	-	-	-
29483	Summerville	Urban	V	29483	29484	-	-	Berkeley	Charleston	Dorchester	-
29485	Summerville	Urban	V	29485	-	-	-	Charleston	Dorchester	-	-
29487	Wadmalaw Island	Rural	V	29487	-	-	-	Charleston	-	-	-
29488	Walterboro	Rural	V	29433	29488	-	-	Colleton	-	-	-
29492	Wando	Suburban	V	29492	-	-	-	Berkeley	-	-	-
29493	Williams	Rural	V	29493	-	-	-	Colleton	-	-	-
29501	Florence	Urban	IV	29501	29502	29503	-	Darlington	Florence	-	-
29505	Florence	Urban	IV	29504	29505	-	-	Florence	-	-	-
29506	Florence	Suburban	IV	29506	-	-	-	Darlington	Florence	-	-
29510	Andrews	Rural	IV	29510	-	-	-	Georgetown	Williamsburg	-	-
29511	Aynor	Rural	IV	29511	-	-	-	Horry	-	-	-
29512	Bennettsville	Suburban	IV	29512	-	-	-	Marlboro	-	-	-
29516	Blenheim	Rural	IV	29516	-	-	-	Marlboro	-	-	-
29518	Cades	Rural	IV	29518	-	-	-	Williamsburg	-	-	-
29519	Centenary	Rural	IV	29519	-	-	-	Marion	-	-	-
29520	Cheraw	Suburban	IV	29520	-	-	-	Chesterfield	-	-	-
29525	Clio	Rural	IV	29525	-	-	-	Marlboro	-	-	-
29526	Conway	Suburban	IV	29526	29528	-	-	Horry	-	-	-
29527	Conway	Rural	IV	29527	-	-	-	Horry	-	-	-
29530	Coward	Rural	IV	29530	-	-	-	Florence	-	-	-
29532	Darlington	Suburban	IV	29532	-	-	-	Darlington	-	-	-
29536	Dillon	Suburban	IV	29536	29573	-	-	Dillon	-	-	-
29540	Darlington	Rural	IV	29540	-	-	-	Darlington	-	-	-
29541	Effingham	Rural	IV	29541	-	-	-	Florence	-	-	-
29543	Fork	Rural	IV	29543	-	-	-	Dillon	-	-	-
29544	Galivants Ferry	Rural	IV	29544	-	-	-	Horry	-	-	-
29545	Green Sea	Rural	IV	29545	-	-	-	Horry	-	-	-

ZIP Code Tabulation Area (ZCTA) Locator Table

ZCTA	ZCTA Name	Urban/Rural Classification	Perinatal Region	Associated ZIP Codes				Associated Counties			
				ZIP 1	ZIP 2	ZIP 3	ZIP 4	County 1	County 2	County 3	County 4
29546	Gresham	Rural	IV	29546	-	-	-	Marion	-	-	-
29547	Hamer	Rural	IV	29547	-	-	-	Dillon	-	-	-
29550	Hartsville	Suburban	IV	29550	29551	-	-	Chesterfield	Darlington	Lee	-
29554	Hemingway	Rural	IV	29554	-	-	-	Florence	Georgetown	Williamsburg	-
29555	Johnsonville	Rural	IV	29555	-	-	-	Florence	Williamsburg	-	-
29556	Kingstree	Suburban	IV	29556	-	-	-	Williamsburg	-	-	-
29560	Lake City	Suburban	IV	29560	-	-	-	Clarendon	Florence	Williamsburg	-
29563	Lake View	Rural	IV	29563	-	-	-	Dillon	-	-	-
29564	Lane	Rural	IV	29564	-	-	-	Williamsburg	-	-	-
29565	Latta	Rural	IV	29565	-	-	-	Dillon	Marion	Marlboro	-
29566	Little River	Urban	IV	29566	-	-	-	Horry	-	-	-
29567	Little Rock	Rural	IV	29567	-	-	-	Dillon	-	-	-
29568	Longs	Rural	IV	29568	-	-	-	Horry	-	-	-
29569	Loris	Rural	IV	29569	-	-	-	Horry	-	-	-
29570	McColl	Rural	IV	29570	-	-	-	Marlboro	-	-	-
29571	Marion	Suburban	IV	29571	-	-	-	Marion	-	-	-
29572	Myrtle Beach	Urban	IV	29572	-	-	-	Horry	-	-	-
29574	Mullins	Suburban	IV	29574	29589	-	-	Dillon	Marion	-	-
29575	Myrtle Beach	Urban	IV	29575	-	-	-	Horry	-	-	-
29576	Murrells Inlet	Urban	IV	29576	-	-	-	Georgetown	Horry	-	-
29577	Myrtle Beach	Urban	IV	29577	29578	-	-	Horry	-	-	-
29579	Myrtle Beach	Urban	IV	29579	-	-	-	Horry	-	-	-
29580	Nesmith	Rural	IV	29580	-	-	-	Williamsburg	-	-	-
29581	Nichols	Rural	IV	29581	-	-	-	Dillon	Horry	Marion	-
29582	North Myrtle Beach	Urban	IV	29582	29587	29597	29598	Horry	-	-	-
29583	Pamplico	Rural	IV	29583	-	-	-	Florence	-	-	-
29584	Patrick	Rural	IV	29584	-	-	-	Chesterfield	-	-	-
29585	Pawleys Island	Urban	V	29585	-	-	-	Georgetown	-	-	-
29588	Socastee	Urban	IV	29588	-	-	-	Horry	-	-	-

ZIP Code Tabulation Area (ZCTA) Locator Table

ZCTA	ZCTA Name	Urban/Rural Classification	Perinatal Region	Associated ZIP Codes				Associated Counties			
				ZIP 1	ZIP 2	ZIP 3	ZIP 4	County 1	County 2	County 3	County 4
29590	Salters	Rural	IV	29590	-	-	-	Williamsburg	-	-	-
29591	Scranton	Rural	IV	29591	-	-	-	Florence	-	-	-
29592	Sellers	Rural	IV	29592	-	-	-	Dillon	Marion	-	-
29593	Society Hill	Rural	IV	29593	-	-	-	Chesterfield	Darlington	-	-
29594	Tatum	Rural	IV	29594	-	-	-	Marlboro	-	-	-
29596	Wallace	Rural	IV	29596	-	-	-	Marlboro	-	-	-
29601	Greenville	Urban	I	29601	29602	29603	29612	Greenville	-	-	-
29605	Greenville	Urban	I	29604	29605	29636	-	Greenville	-	-	-
29607	Greenville	Urban	I	29606	29607	-	-	Greenville	-	-	-
29609	Greenville	Urban	I	29608	29609	-	-	Greenville	-	-	-
29611	Greenville	Urban	I	29610	29611	-	-	Anderson	Greenville	Pickens	-
29613	Greenville	Urban	I	29613	-	-	-	Greenville	-	-	-
29614	Greenville	Urban	I	29614	-	-	-	Greenville	-	-	-
29615	Greenville	Urban	I	29615	29616	-	-	Greenville	-	-	-
29617	Greenville	Urban	I	29617	-	-	-	Greenville	-	-	-
29620	Abbeville	Rural	I	29620	-	-	-	Abbeville	McCormick	-	-
29621	Anderson	Urban	I	29621	29622	29623	-	Anderson	-	-	-
29624	Anderson	Urban	I	29624	-	-	-	Anderson	-	-	-
29625	Anderson	Urban	I	29625	-	-	-	Anderson	-	-	-
29626	Anderson	Suburban	I	29626	-	-	-	Anderson	-	-	-
29627	Belton	Rural	I	29627	-	-	-	Abbeville	Anderson	Greenville	-
29628	Calhoun Falls	Rural	I	29628	-	-	-	Abbeville	McCormick	-	-
29630	Central	Suburban	I	29630	-	-	-	Anderson	Pickens	-	-
29631	Clemson	Urban	I	29631	29633	-	-	Anderson	Pickens	-	-
29634	Fair Play	Urban	I	29632	29634	-	-	Pickens	-	-	-
29635	Cleveland	Rural	I	29635	-	-	-	Greenville	Pickens	-	-
29638	Donalds	Rural	I	29638	-	-	-	Abbeville	Greenwood	-	-
29639	Due West	Rural	I	29639	-	-	-	Abbeville	-	-	-
29640	Easley	Suburban	I	29640	29641	-	-	Pickens	-	-	-

ZIP Code Tabulation Area (ZCTA) Locator Table

ZCTA	ZCTA Name	Urban/Rural Classification	Perinatal Region	Associated ZIP Codes				Associated Counties			
				ZIP 1	ZIP 2	ZIP 3	ZIP 4	County 1	County 2	County 3	County 4
29642	Easley	Urban	I	29642	-	-	-	Anderson	Pickens	-	-
29643	Fair Play	Rural	I	29643	-	-	-	Anderson	Oconee	-	-
29644	Fountain Inn	Suburban	I	29644	-	-	-	Greenville	Laurens	-	-
29645	Gray Court	Rural	I	29645	-	-	-	Laurens	-	-	-
29646	Greenwood	Urban	I	29646	29648	-	-	Abbeville	Greenwood	-	-
29649	Greenwood	Urban	I	29649	-	-	-	Abbeville	Greenwood	-	-
29650	Greer	Urban	I	29650	29652	-	-	Greenville	Spartanburg	-	-
29651	Greer	Urban	I	29651	-	-	-	Greenville	Spartanburg	-	-
29653	Hodges	Rural	I	29647	29653	29695	-	Abbeville	Greenwood	-	-
29654	Honea Path	Rural	I	29654	-	-	-	Abbeville	Anderson	Greenville	Laurens
29655	Iva	Rural	I	29655	-	-	-	Abbeville	Anderson	-	-
29657	Liberty	Suburban	I	29657	-	-	-	Anderson	Pickens	-	-
29658	Long Creek	Rural	I	29658	-	-	-	Oconee	-	-	-
29659	Lowndesville	Rural	I	29659	-	-	-	Abbeville	-	-	-
29661	Marietta	Rural	I	29661	-	-	-	Greenville	Pickens	-	-
29662	Mauldin	Urban	I	29662	-	-	-	Greenville	-	-	-
29664	Mountain Rest	Rural	I	29664	-	-	-	Oconee	-	-	-
29665	Newry	Urban	I	29665	-	-	-	Oconee	-	-	-
29666	Ninety Six	Rural	I	29666	-	-	-	Greenwood	Saluda	-	-
29667	Norris	Urban	I	29667	-	-	-	Pickens	-	-	-
29669	Pelzer	Rural	I	29669	-	-	-	Anderson	Greenville	-	-
29670	Pendleton	Suburban	I	29656	29670	29677	-	Anderson	Pickens	-	-
29671	Pickens	Rural	I	29671	-	-	-	Pickens	-	-	-
29672	Seneca	Suburban	I	29672	-	-	-	Oconee	-	-	-
29673	Piedmont	Suburban	I	29673	-	-	-	Anderson	Greenville	-	-
29676	Salem	Rural	I	29676	-	-	-	Oconee	-	-	-
29678	Seneca	Suburban	I	29678	29679	-	-	Oconee	Pickens	-	-
29680	Simpsonville	Urban	I	29680	-	-	-	Greenville	-	-	-
29681	Simpsonville	Urban	I	29681	-	-	-	Greenville	-	-	-

ZIP Code Tabulation Area (ZCTA) Locator Table

ZCTA	ZCTA Name	Urban/Rural Classification	Perinatal Region	Associated ZIP Codes				Associated Counties			
				ZIP 1	ZIP 2	ZIP 3	ZIP 4	County 1	County 2	County 3	County 4
29682	Six Mile	Rural	I	29682	-	-	-	Pickens	-	-	-
29683	Slater	Urban	I	29683	-	-	-	Greenville	-	-	-
29684	Starr	Rural	I	29684	-	-	-	Anderson	-	-	-
29685	Sunset	Rural	I	29685	-	-	-	Pickens	-	-	-
29686	Tamassee	Rural	I	29686	-	-	-	Oconee	-	-	-
29687	Taylors	Urban	I	29687	-	-	-	Greenville	-	-	-
29689	Townville	Rural	I	29689	-	-	-	Anderson	Oconee	-	-
29690	Travelers Rest	Rural	I	29688	29690	-	-	Greenville	-	-	-
29691	Walhalla	Rural	I	29691	-	-	-	Oconee	-	-	-
29692	Ware Shoals	Rural	I	29692	-	-	-	Abbeville	Greenwood	Laurens	-
29693	Westminster	Rural	I	29675	29693	-	-	Oconee	-	-	-
29696	West Union	Rural	I	29696	-	-	-	Oconee	-	-	-
29697	Williamston	Suburban	I	29697	-	-	-	Anderson	-	-	-
29702	Blacksburg	Rural	II	29702	-	-	-	Cherokee	York	-	-
29704	Catawba	Rural	III	29704	-	-	-	Chester	York	-	-
29706	Chester	Suburban	II	29706	-	-	-	Chester	York	-	-
29707	Fort Mill	Urban	III	29707	-	-	-	Lancaster	York	-	-
29708	Fort Mill	Urban	III	29708	-	-	-	York	-	-	-
29709	Chesterfield	Rural	IV	29709	-	-	-	Chesterfield	-	-	-
29710	Clover	Suburban	III	29703	29710	-	-	York	-	-	-
29712	Edgemoor	Rural	II	29712	-	-	-	Chester	York	-	-
29714	Fort Lawn	Rural	II	29714	-	-	-	Chester	-	-	-
29715	Fort Mill	Urban	III	29715	29716	-	-	York	-	-	-
29717	Hickory Grove	Rural	III	29717	-	-	-	York	-	-	-
29718	Jefferson	Rural	IV	29718	-	-	-	Chesterfield	Kershaw	-	-
29720	Lancaster	Suburban	III	29720	29721	29722	29744	Lancaster	-	-	-
29724	Lando	Rural	II	29724	-	-	-	Chester	-	-	-
29726	McConnells	Rural	III	29726	-	-	-	York	-	-	-
29727	Mount Croghan	Rural	IV	29727	-	-	-	Chesterfield	-	-	-

ZIP Code Tabulation Area (ZCTA) Locator Table

ZCTA	ZCTA Name	Urban/Rural Classification	Perinatal Region	Associated ZIP Codes				Associated Counties			
				ZIP 1	ZIP 2	ZIP 3	ZIP 4	County 1	County 2	County 3	County 4
29728	Pageland	Rural	IV	29728	-	-	-	Chesterfield	-	-	-
29729	Richburg	Rural	II	29729	-	-	-	Chester	-	-	-
29730	Rock Hill	Urban	III	29730	29731	29734	-	Chester	York	-	-
29732	Rock Hill	Urban	III	29732	-	-	-	York	-	-	-
29733	Rock Hill	Urban	III	29733	-	-	-	York	-	-	-
29741	Ruby	Rural	IV	29741	-	-	-	Chesterfield	-	-	-
29742	Sharon	Rural	III	29742	-	-	-	Chester	York	-	-
29743	Smyrna	Rural	III	29743	-	-	-	York	-	-	-
29745	York	Suburban	III	29745	-	-	-	York	-	-	-
29801	Aiken	Urban	III	29801	29802	-	-	Aiken	-	-	-
29803	Aiken	Suburban	III	29803	29804	29839	-	Aiken	-	-	-
29805	Aiken	Rural	III	29805	-	-	-	Aiken	-	-	-
29809	New Ellenton	Suburban	III	29809	-	-	-	Aiken	-	-	-
29810	Allendale	Suburban	III	29810	-	-	-	Allendale	-	-	-
29812	Barnwell	Rural	III	29808	29812	29813	-	Allendale	Barnwell	-	-
29816	Bath	Urban	III	29816	-	-	-	Aiken	-	-	-
29817	Blackville	Rural	III	29817	-	-	-	Bamberg	Barnwell	-	-
29819	Bradley	Rural	I	29819	-	-	-	Abbeville	Greenwood	McCormick	-
29821	Clarks Hill	Rural	I	29821	-	-	-	Edgefield	McCormick	-	-
29824	Edgefield	Suburban	I	29824	-	-	-	Edgefield	Saluda	-	-
29826	Elko	Rural	III	29826	-	-	-	Barnwell	-	-	-
29827	Fairfax	Rural	III	29827	29846	-	-	Allendale	-	-	-
29828	Gloverville	Urban	III	29828	-	-	-	Aiken	-	-	-
29829	Graniteville	Suburban	III	29829	-	-	-	Aiken	-	-	-
29831	Jackson	Rural	III	29831	-	-	-	Aiken	-	-	-
29832	Johnston	Rural	I	29832	-	-	-	Edgefield	Saluda	-	-
29834	Langley	Urban	III	29834	-	-	-	Aiken	-	-	-
29835	McCormick	Rural	I	29835	-	-	-	Edgefield	McCormick	-	-
29836	Martin	Rural	III	29836	-	-	-	Allendale	Barnwell	-	-

ZIP Code Tabulation Area (ZCTA) Locator Table

ZCTA	ZCTA Name	Urban/Rural Classification	Perinatal Region	Associated ZIP Codes				Associated Counties			
				ZIP 1	ZIP 2	ZIP 3	ZIP 4	County 1	County 2	County 3	County 4
29838	Modoc	Rural	I	29838	-	-	-	Edgefield	McCormick	-	-
29840	Mount Carmel	Rural	I	29840	-	-	-	McCormick	-	-	-
29841	North Augusta	Urban	III	29841	29861	-	-	Aiken	-	-	-
29842	North Augusta	Rural	III	29822	29842	-	-	Aiken	-	-	-
29843	Olar	Rural	III	29843	-	-	-	Bamberg	Barnwell	-	-
29844	Parksville	Rural	I	29844	-	-	-	McCormick	-	-	-
29845	Parksville	Rural	I	29845	-	-	-	Edgefield	McCormick	-	-
29847	Trenton	Rural	I	29847	-	-	-	Aiken	Edgefield	-	-
29848	Troy	Rural	I	29848	-	-	-	Greenwood	McCormick	Saluda	-
29849	Ulmer	Rural	III	29849	-	-	-	Allendale	Barnwell	-	-
29850	Vaucluse	Rural	III	29850	-	-	-	Aiken	-	-	-
29851	Warrenville	Urban	III	29851	-	-	-	Aiken	-	-	-
29853	Williston	Rural	III	29853	-	-	-	Aiken	Barnwell	-	-
29856	Windsor	Rural	III	29856	-	-	-	Aiken	-	-	-
29860	North Augusta	Suburban	I	29860	-	-	-	Aiken	Edgefield	-	-
29899	McCormick	Rural	I	29899	-	-	-	McCormick	-	-	-
29902	Beaufort	Urban	V	29901	29902	-	-	Beaufort	-	-	-
29904	Beaufort	Urban	V	29904	-	-	-	Beaufort	-	-	-
29905	Beaufort	Urban	V	29905	-	-	-	Beaufort	-	-	-
29906	Beaufort	Urban	V	29903	29906	-	-	Beaufort	-	-	-
29907	Beaufort	Suburban	V	29907	-	-	-	Beaufort	-	-	-
29909	Bluffton	Urban	V	29909	-	-	-	Beaufort	Jasper	-	-
29910	Bluffton	Urban	V	29910	-	-	-	Beaufort	-	-	-
29911	Brunson	Rural	V	29911	-	-	-	Hampton	-	-	-
29912	Coosawhatchie	Rural	V	29912	-	-	-	Jasper	-	-	-
29915	Daufuskie Island	Rural	V	29915	-	-	-	Beaufort	-	-	-
29916	Barkersville	Rural	V	29916	-	-	-	Hampton	Jasper	-	-
29918	Estill	Rural	V	29918	-	-	-	Hampton	-	-	-
29920	Fripp Island	Rural	V	29920	-	-	-	Beaufort	-	-	-

ZIP Code Tabulation Area (ZCTA) Locator Table

ZCTA	ZCTA Name	Urban/Rural Classification	Perinatal Region	Associated ZIP Codes				Associated Counties			
				ZIP 1	ZIP 2	ZIP 3	ZIP 4	County 1	County 2	County 3	County 4
29921	Furman	Rural	V	29921	-	-	-	Hampton	-	-	-
29922	Garnett	Rural	V	29922	-	-	-	Hampton	Jasper	-	-
29923	Gifford	Rural	V	29923	-	-	-	Hampton	-	-	-
29924	Hampton	Suburban	V	29913	29924	29933	-	Hampton	-	-	-
29926	Hilton Head Island	Urban	V	29925	29926	-	-	Beaufort	-	-	-
29927	Hardeeville	Rural	V	29927	-	-	-	Beaufort	Jasper	-	-
29928	Hilton Head Island	Urban	V	29928	29938	-	-	Beaufort	-	-	-
29929	Islandton	Rural	V	29929	-	-	-	Colleton	-	-	-
29932	Luray	Rural	V	29932	-	-	-	Allendale	Hampton	-	-
29934	Pineland	Rural	V	29934	-	-	-	Hampton	Jasper	-	-
29935	Port Royal	Urban	V	29935	-	-	-	Beaufort	-	-	-
29936	Ridgeland	Rural	V	29936	-	-	-	Jasper	-	-	-
29939	Scotia	Rural	V	29939	-	-	-	Hampton	-	-	-
29940	Seabrook Island	Rural	V	29914	29931	29940	-	Beaufort	-	-	-
29941	Sheldon	Rural	V	29941	-	-	-	Beaufort	-	-	-
29943	Tillman	Rural	V	29943	-	-	-	Jasper	-	-	-
29944	Varnville	Rural	V	29944	-	-	-	Hampton	Jasper	-	-
29945	Yemassee	Rural	V	29945	-	-	-	Beaufort	Colleton	Hampton	Jasper